

Blount County, Alabama

Average Annual Daily Traffic (AADT) Volume

Existing Volume, vehicles per day (blue)

CAPACITIES, vehicles per day

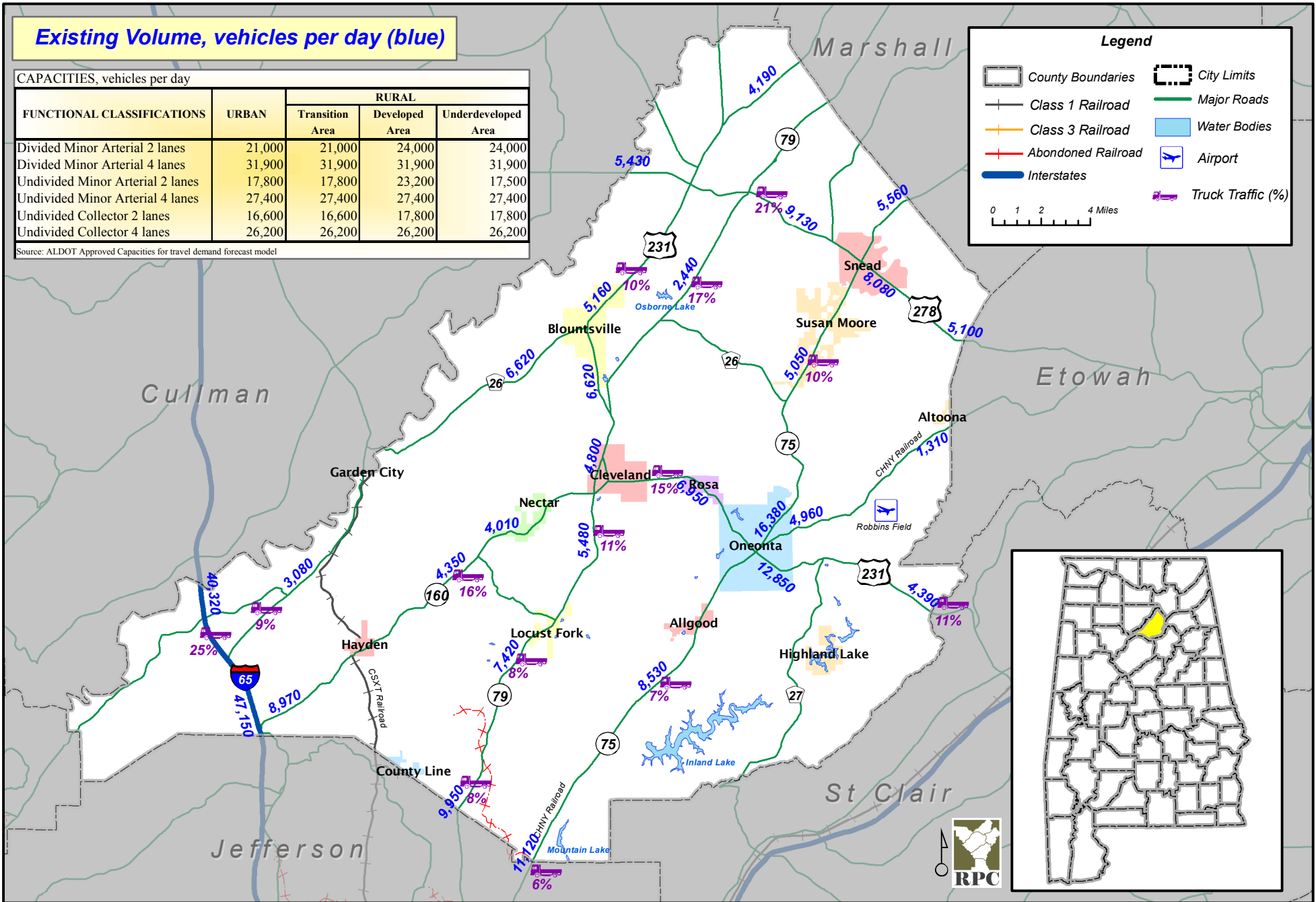
FUNCTIONAL CLASSIFICATIONS	URBAN	RURAL		
		Transition Area	Developed Area	Underdeveloped Area
Divided Minor Arterial 2 lanes	21,000	21,000	24,000	24,000
Divided Minor Arterial 4 lanes	31,900	31,900	31,900	31,900
Undivided Minor Arterial 2 lanes	17,800	17,800	23,200	17,500
Undivided Minor Arterial 4 lanes	27,400	27,400	27,400	27,400
Undivided Collector 2 lanes	16,600	16,600	17,800	17,800
Undivided Collector 4 lanes	26,200	26,200	26,200	26,200

Source: ALDOT Approved Capacities for travel demand forecast model

Legend

<ul style="list-style-type: none"> County Boundaries City Limits Class 1 Railroad Class 3 Railroad Abandoned Railroad Interstates 	<ul style="list-style-type: none"> Major Roads Water Bodies Airport 🚛 Truck Traffic (%)
--	---

0 1 2 4 Miles



Source: ALDOT Traffic Map 2005