



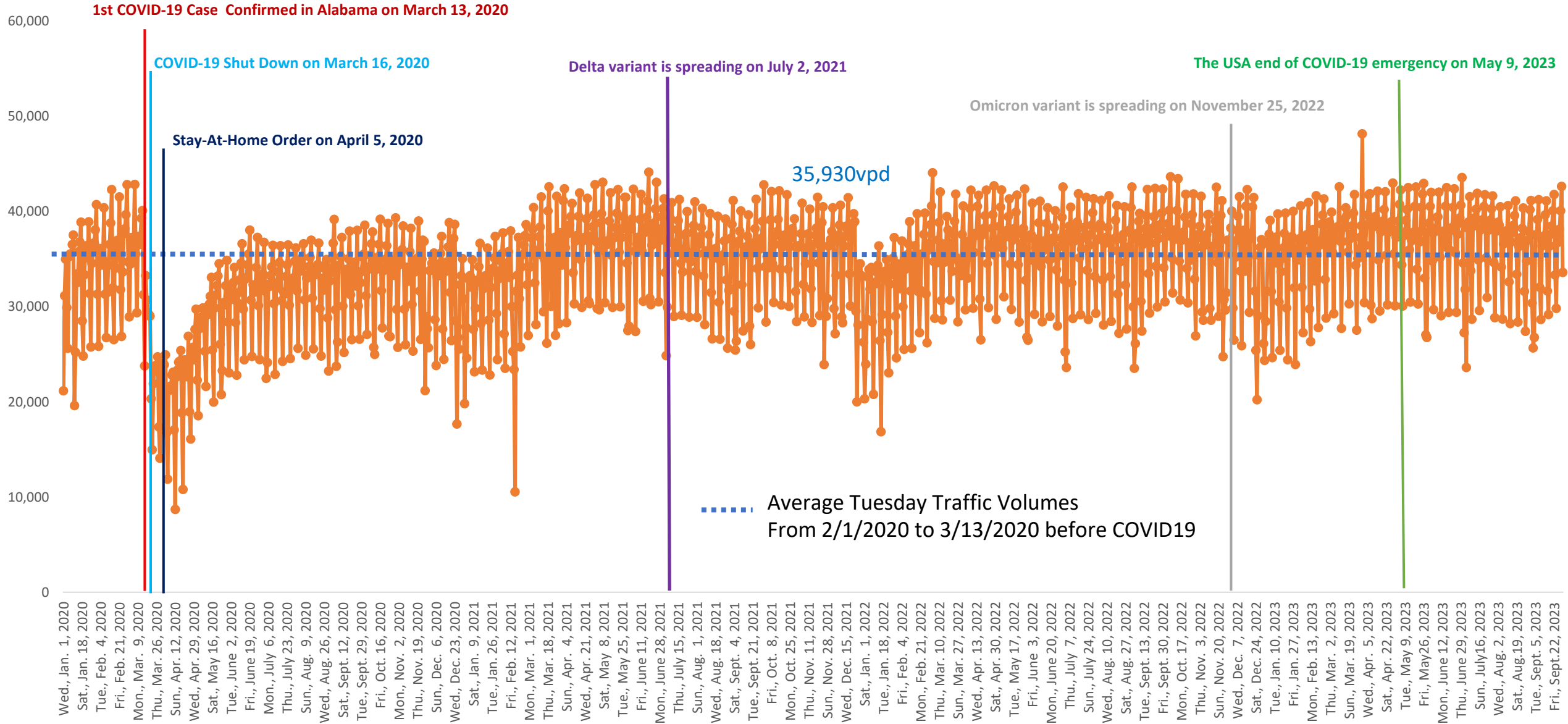
## **AGENDA CONGESTION MANAGEMENT COMMITTEE**

Wednesday, November 15, 2023 at 10:00 a.m.  
Zoom Virtual Meeting

- 1. Post COVID-19 - Traffic Volumes and Crash Trends**
  - **Mike Kaczorowski (RPCGB)**
  
- 2. Worst Freeway Bottlenecks**
  - a. AM & PM Weekday Peak Hours
  - b. INRIX Data Available on All NHS Routes
  - **Mike Kaczorowski (RPCGB)**
  
- 3. ALDOT Updates on Programs and Projects**
  - **ALDOT**
  
- 4. Other**
  - a. Transition from Cube/Voyager to TransCAD – Update and timeline
  - b. New UAB Professor - Dr. Avinash Unnikrishnan

*Anyone needing special accommodations shall contact RPCGB at least 3 business days in advance of meeting at:  
205-264-8473 or 205-264-8436*

# Average Daily Traffic Volumes on Continuous Count Stations From Jan. 1, 2020 to Sept. 31, 2023 in Jefferson And Shelby Counties



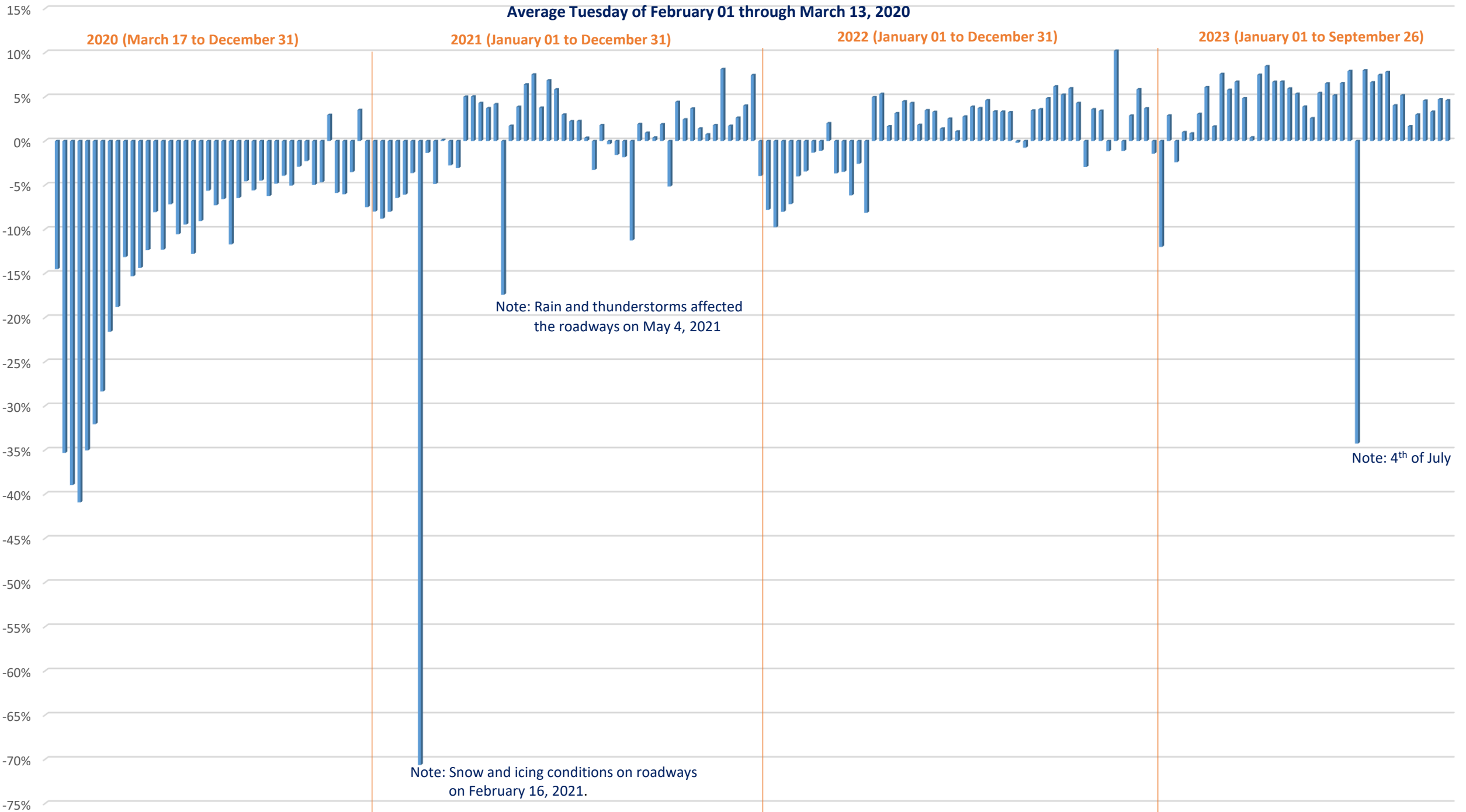
# Average Tuesday Daily Traffic Volume % Change Against Average Tuesday of February 01 through March 13, 2020

2020 (March 17 to December 31)

2021 (January 01 to December 31)

2022 (January 01 to December 31)

2023 (January 01 to September 26)

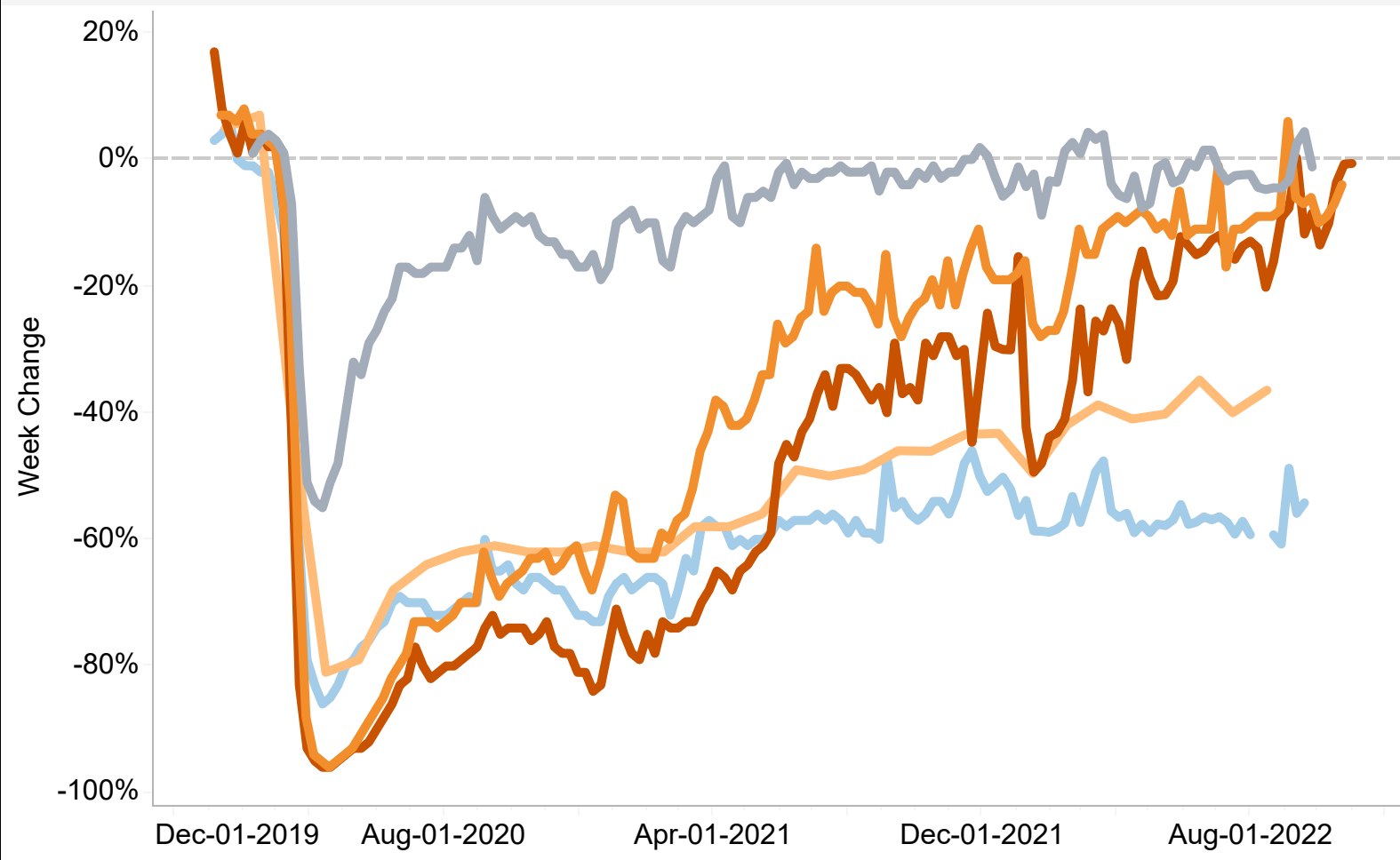


Note: Rain and thunderstorms affected the roadways on May 4, 2021

Note: Snow and icing conditions on roadways on February 16, 2021.

Note: 4<sup>th</sup> of July

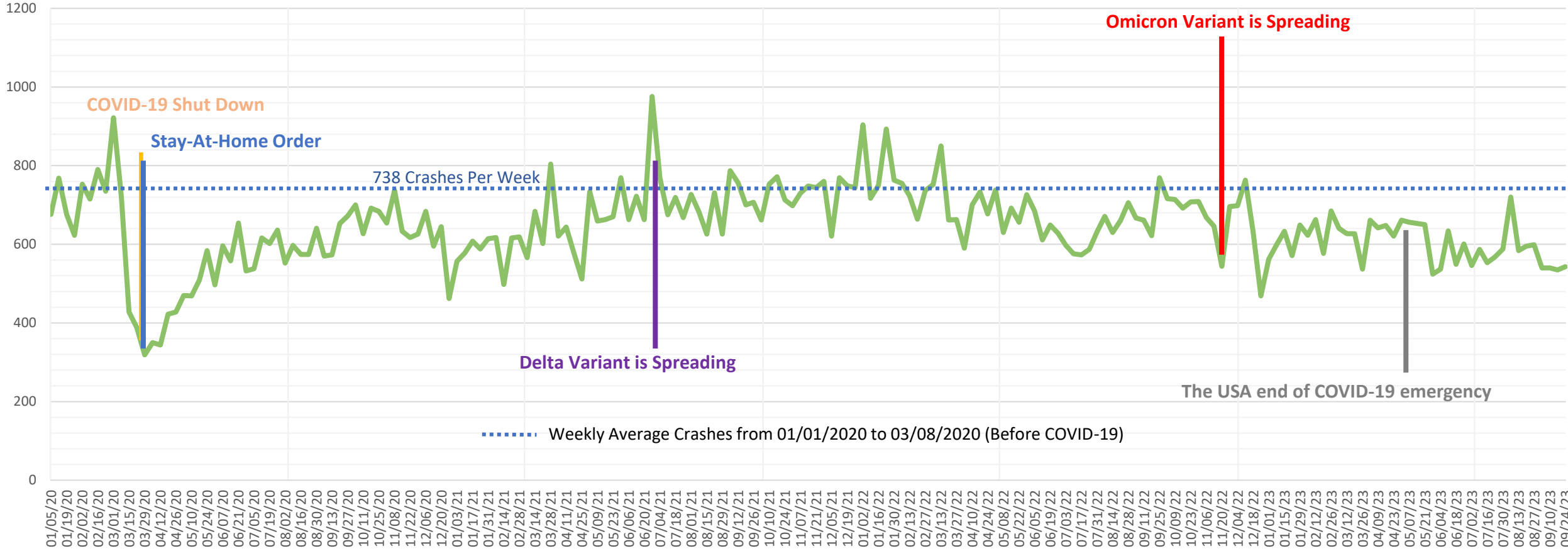
### Passenger Modes Percent Change from Baseline (weekly, except Transit=monthly)



- Roadways, Interstate Passenger VMT
- Aviation, TSA Person Throughput
- Passenger Rail, Amtrak Ridership
- Transit, Total Monthly Ridership
- Intercity Bus, National Network Carriers Riders..

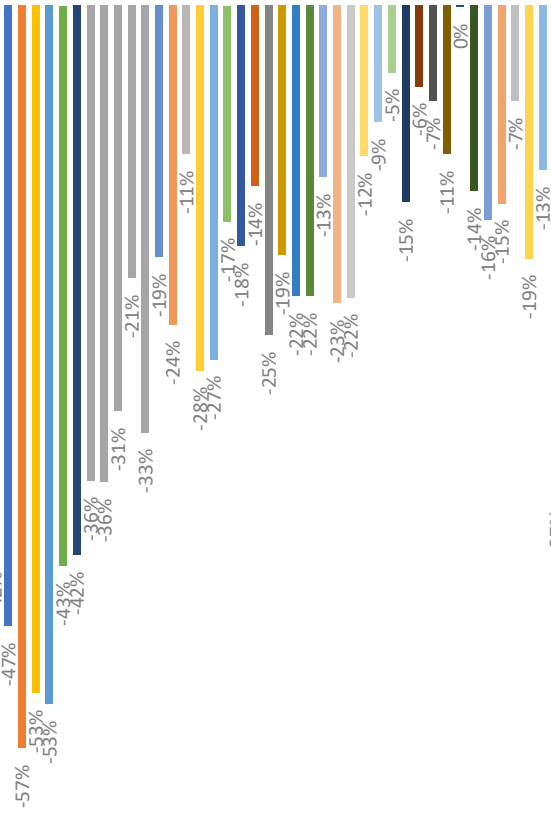
Source: Bureau of Transportation Statistics

# TOTAL WEEKLY CRASHES In Jefferson and Shelby Counties

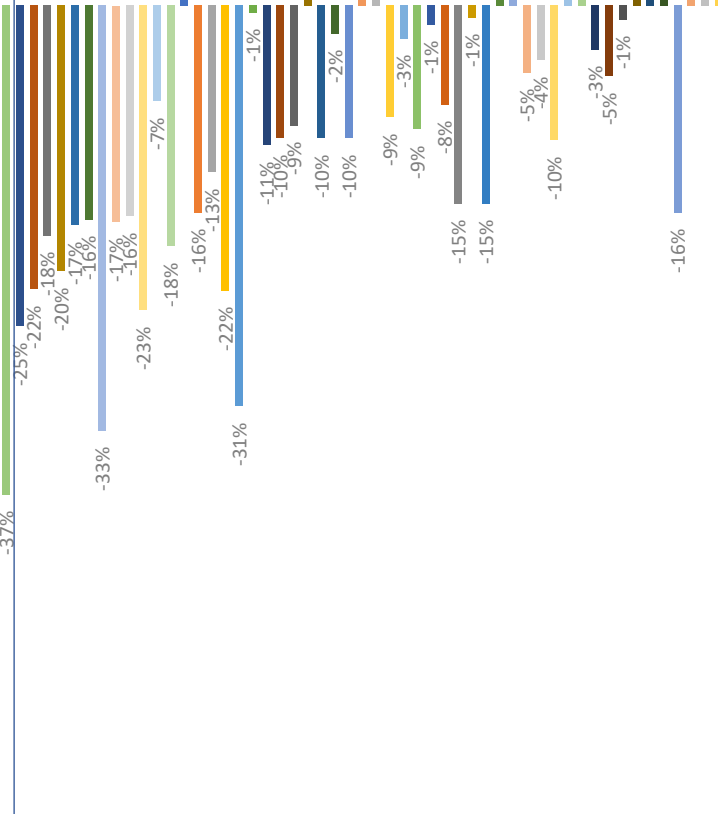


# WEEKLY % CHANGES OF CRASHES IN JEFFERSON AND SHELBY COUNTIES WEEKLY SINCE MARCH 15, 2020 VS. AVERAGE WEEKLY FROM JANUARY 5, 2020 THROUGH MAY 29, 2022

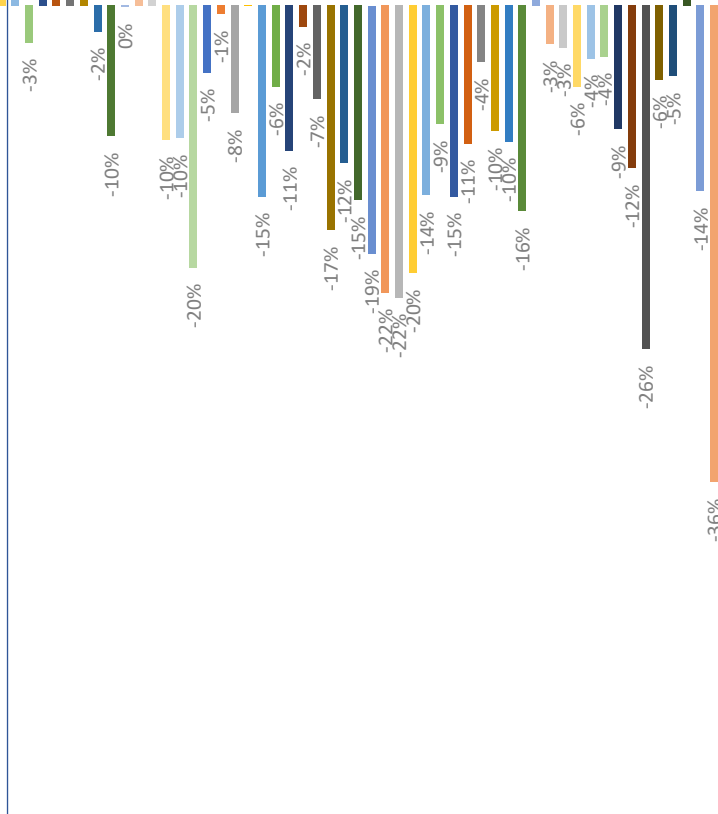
## 2020 (March 15 to December 31)



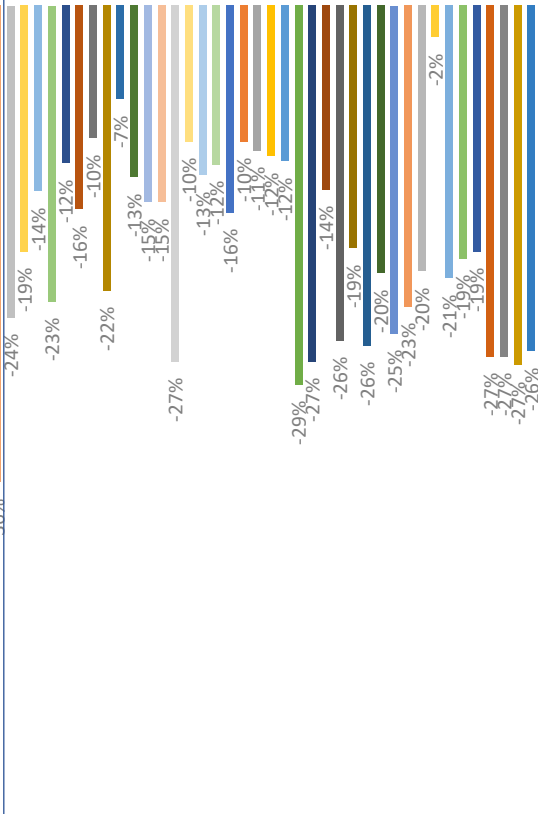
## 2021 (January to December 31)



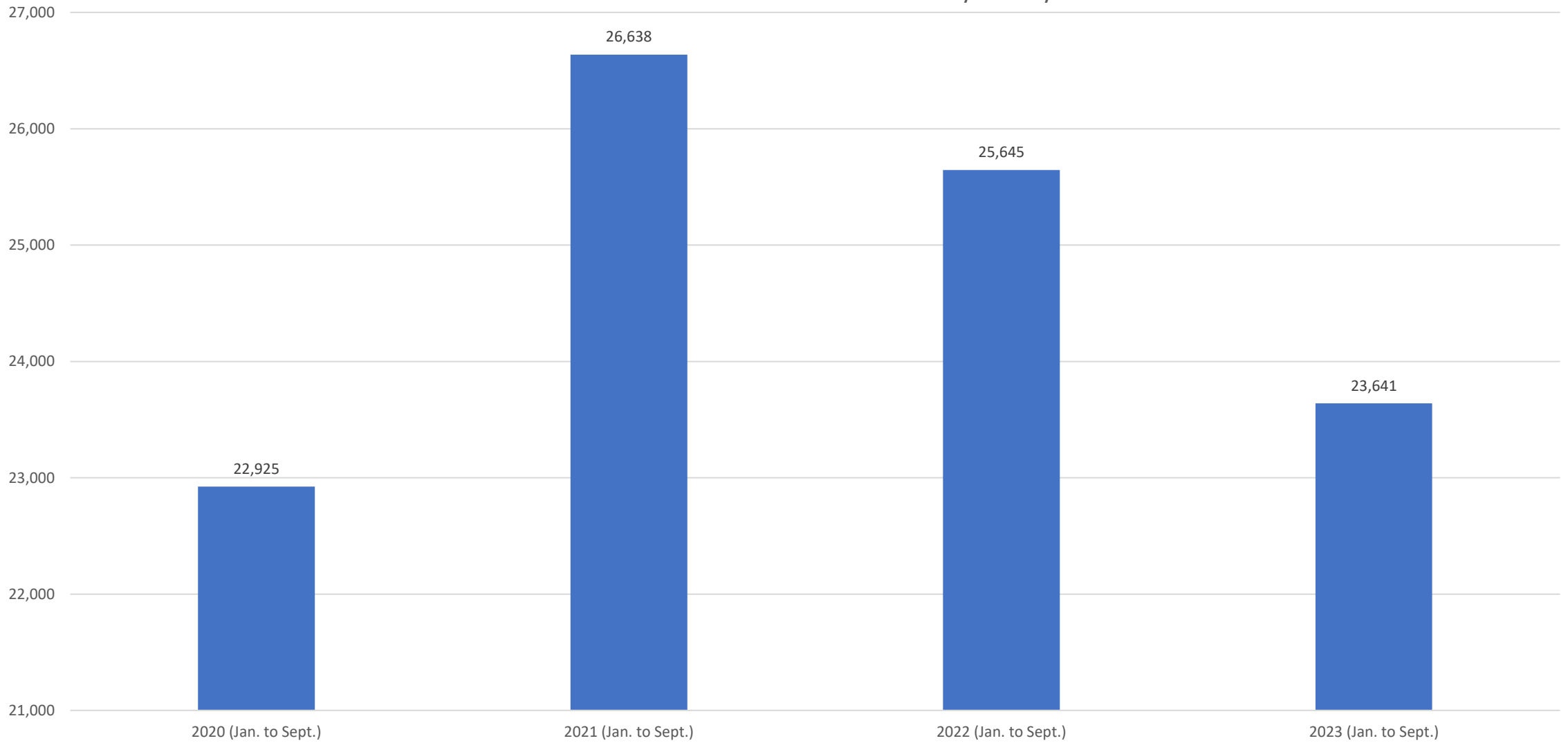
## 2022 (January to December 31)



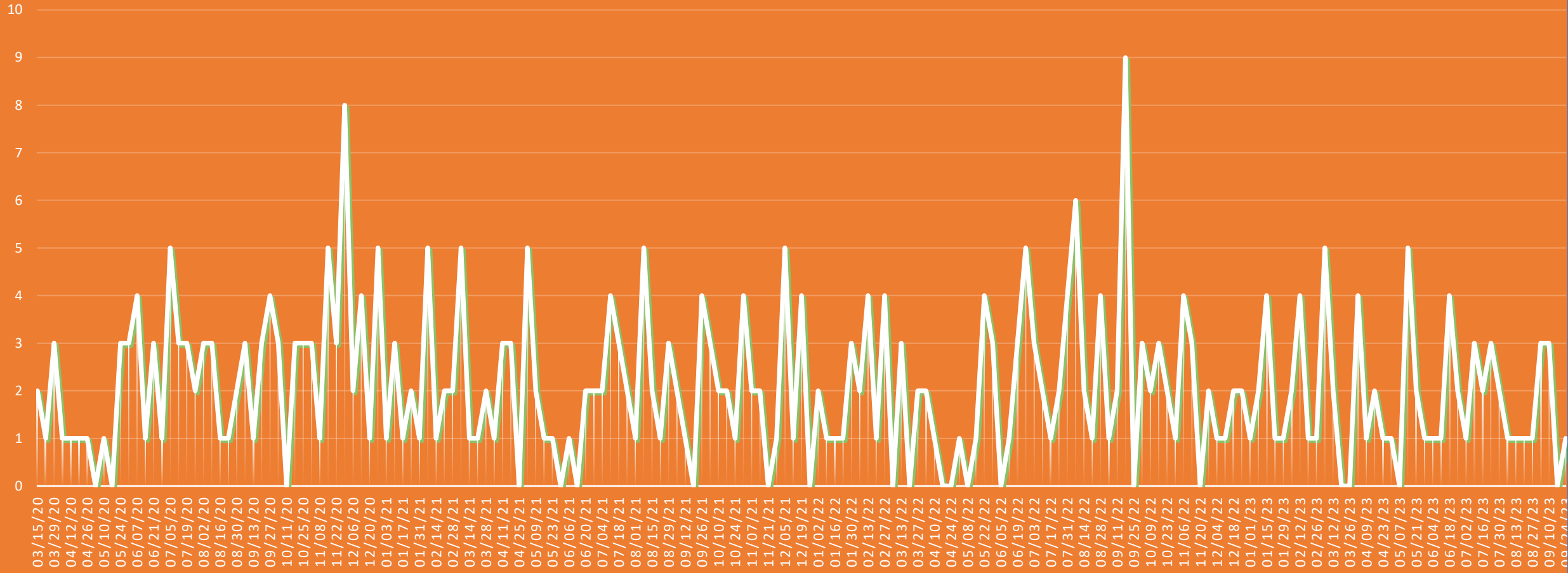
## 2023 (January to September 31)



### Total Crashes for Jefferson and Shelby County



# TOTAL WEEKLY FATAL CRASHES IN JEFFERSON AND SHELBY COUNTIES







## AGENDA CONGESTION MANAGEMENT COMMITTEE

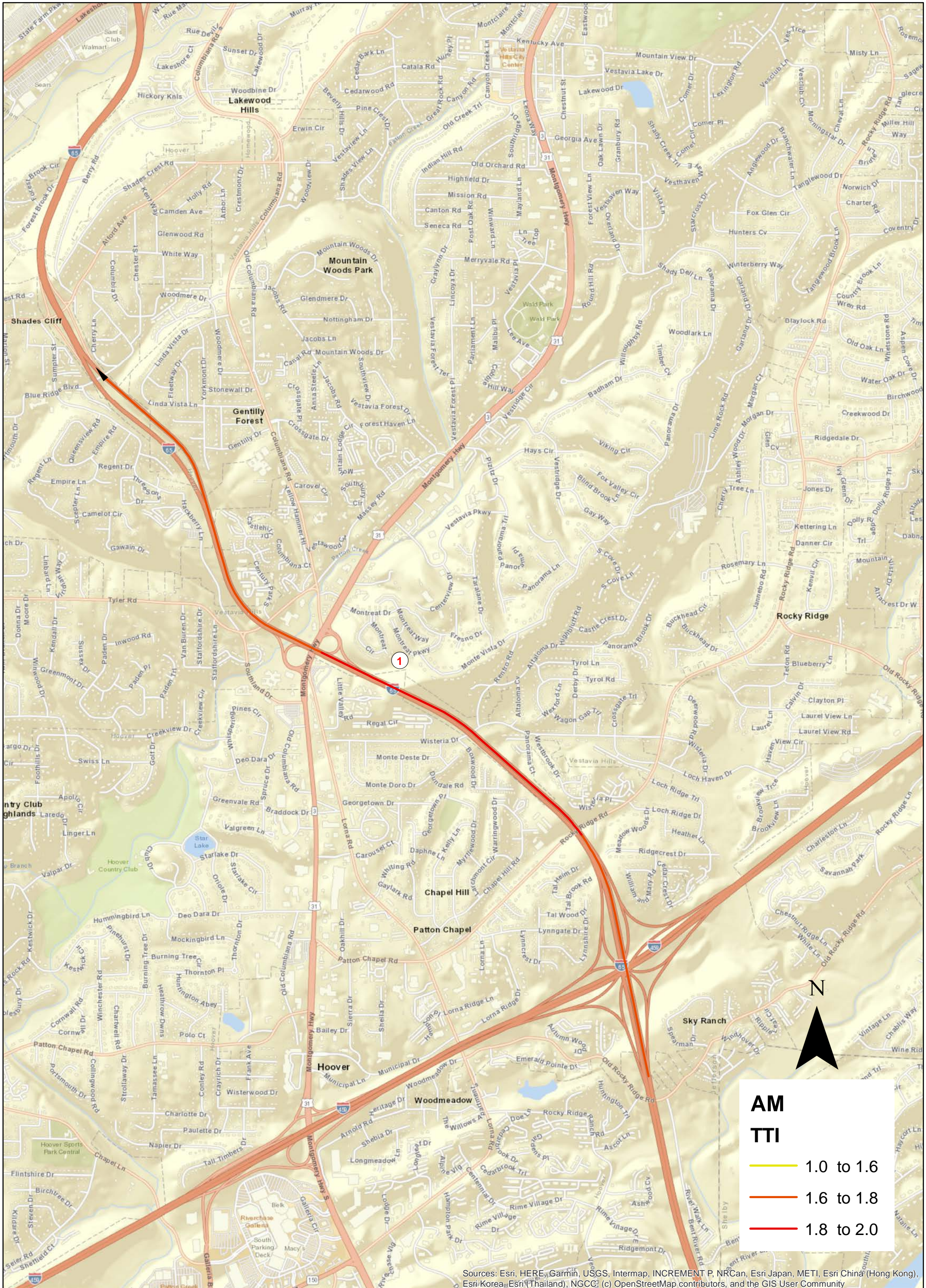
Wednesday, November 15, 2023 at 10:00 a.m.  
Zoom Virtual Meeting

1. **Post COVID-19 - Traffic Volumes and Crash Trends**
  - **Mike Kaczorowski (RPCGB)**
  
2. **Worst Freeway Bottlenecks**
  - a. **AM & PM Weekday Peak Hours**
  - b. **INRIX Data Available on All NHS Routes**
  - **Mike Kaczorowski (RPCGB)**
  
3. **ALDOT Updates on Programs and Projects**
  - **ALDOT**
  
4. **Other**
  - a. **Transition from Cube/Voyager to TransCAD – Update and timeline**
  - b. **New UAB Professor - Dr. Avinash Unnikrishnan**

*Anyone needing special accommodations shall contact RPCGB at least 3 business days in advance of meeting at:  
205-264-8473 or 205-264-8436*



# Bottleneck Analysis for Birmingham MPO All Vehicles Freeway AM Peak (7-8AM) 2022 Group1

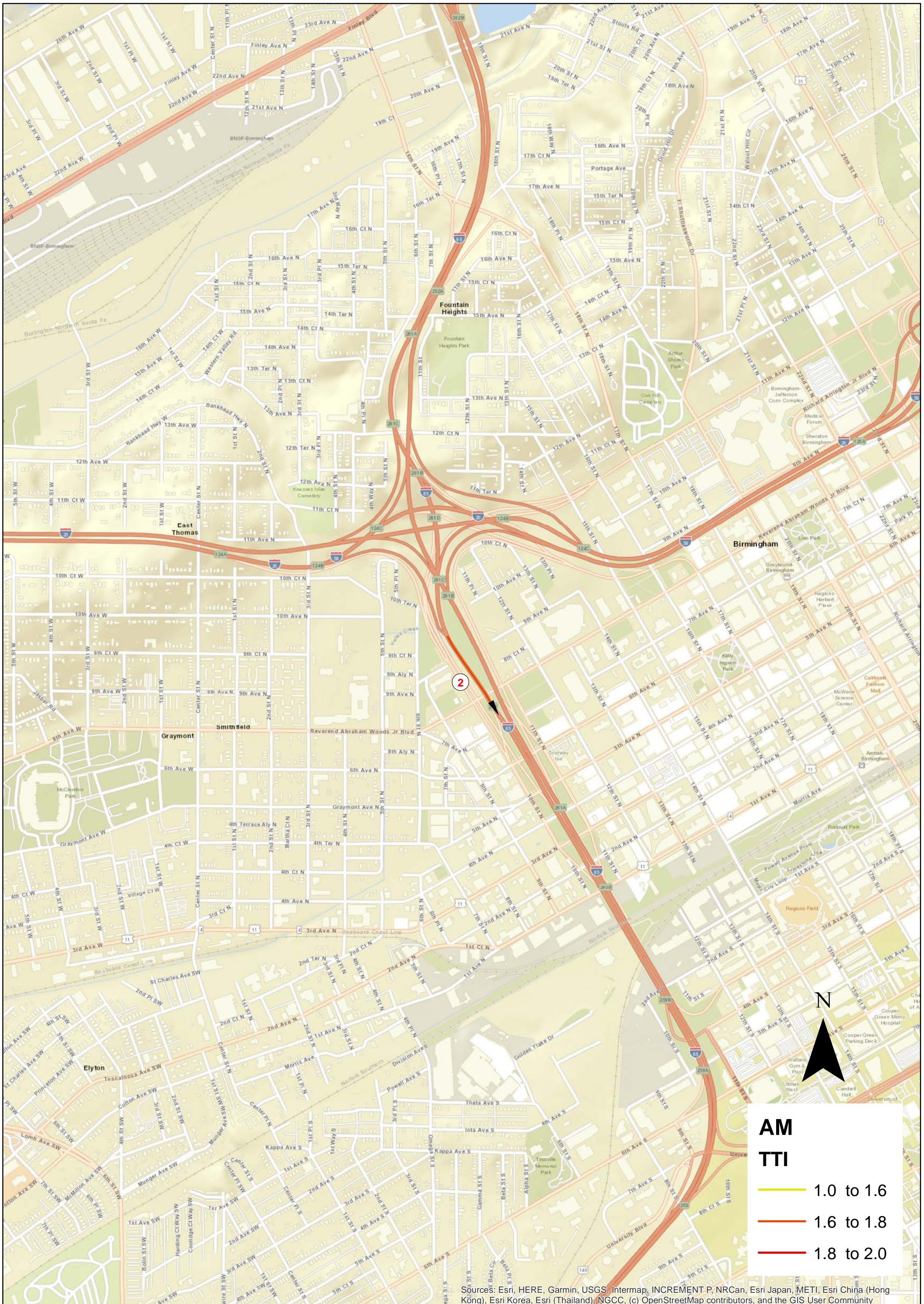


Sources: Esri, HERE, Garmin, USGS, Intermap, INCREMENT P, NRCan, Esri Japan, METI, Esri China (Hong Kong), Esri Korea, Esri (Thailand), NGCC, (c) OpenStreetMap contributors, and the GIS User Community



# Bottleneck Analysis for Birmingham MPO All Vehicles Freeway AM Peak (7-8AM) 2022

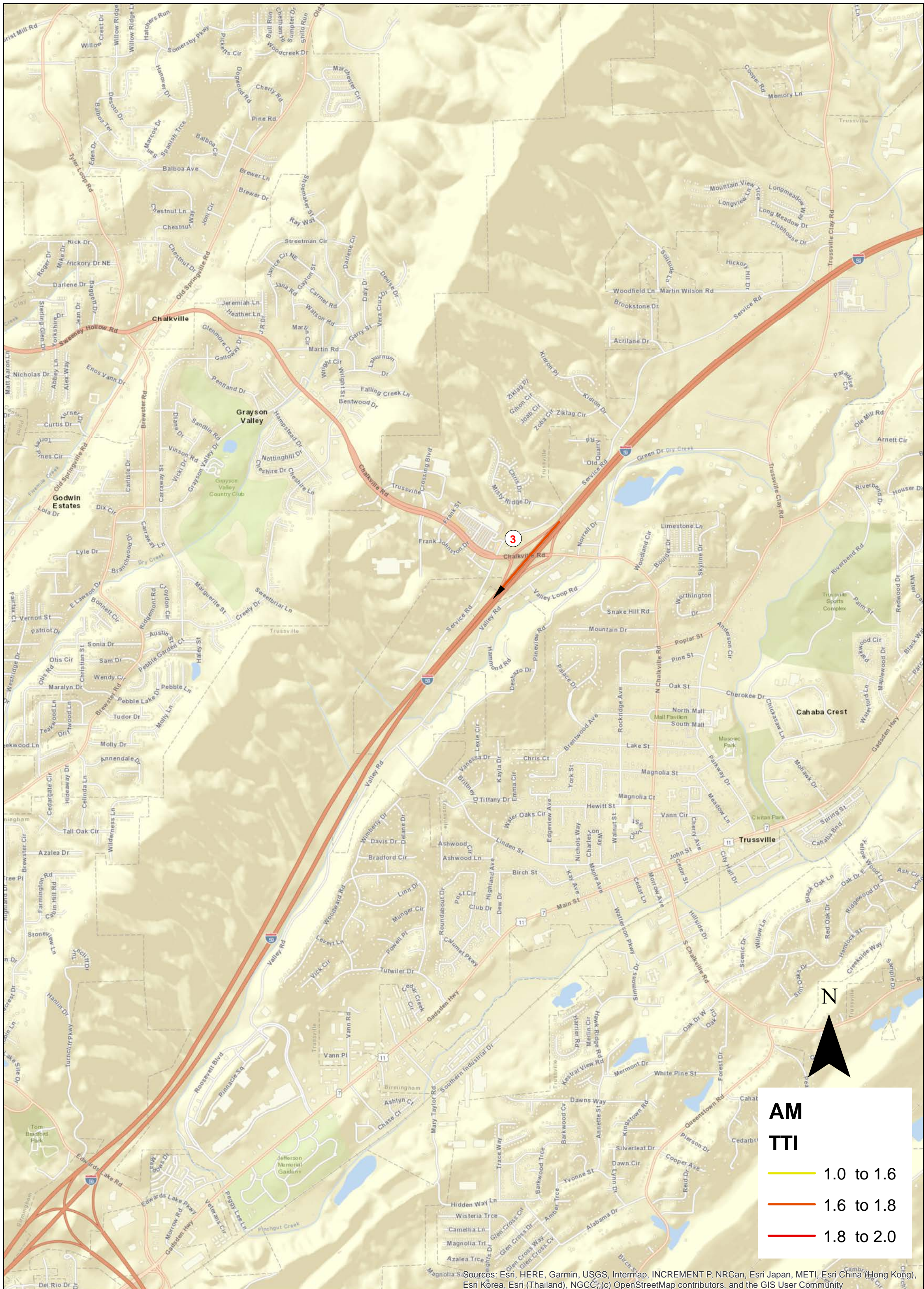
## Group2





# Bottleneck Analysis for Birmingham MPO All Vehicles Freeway AM Peak (7-8AM) 2022

## Group3

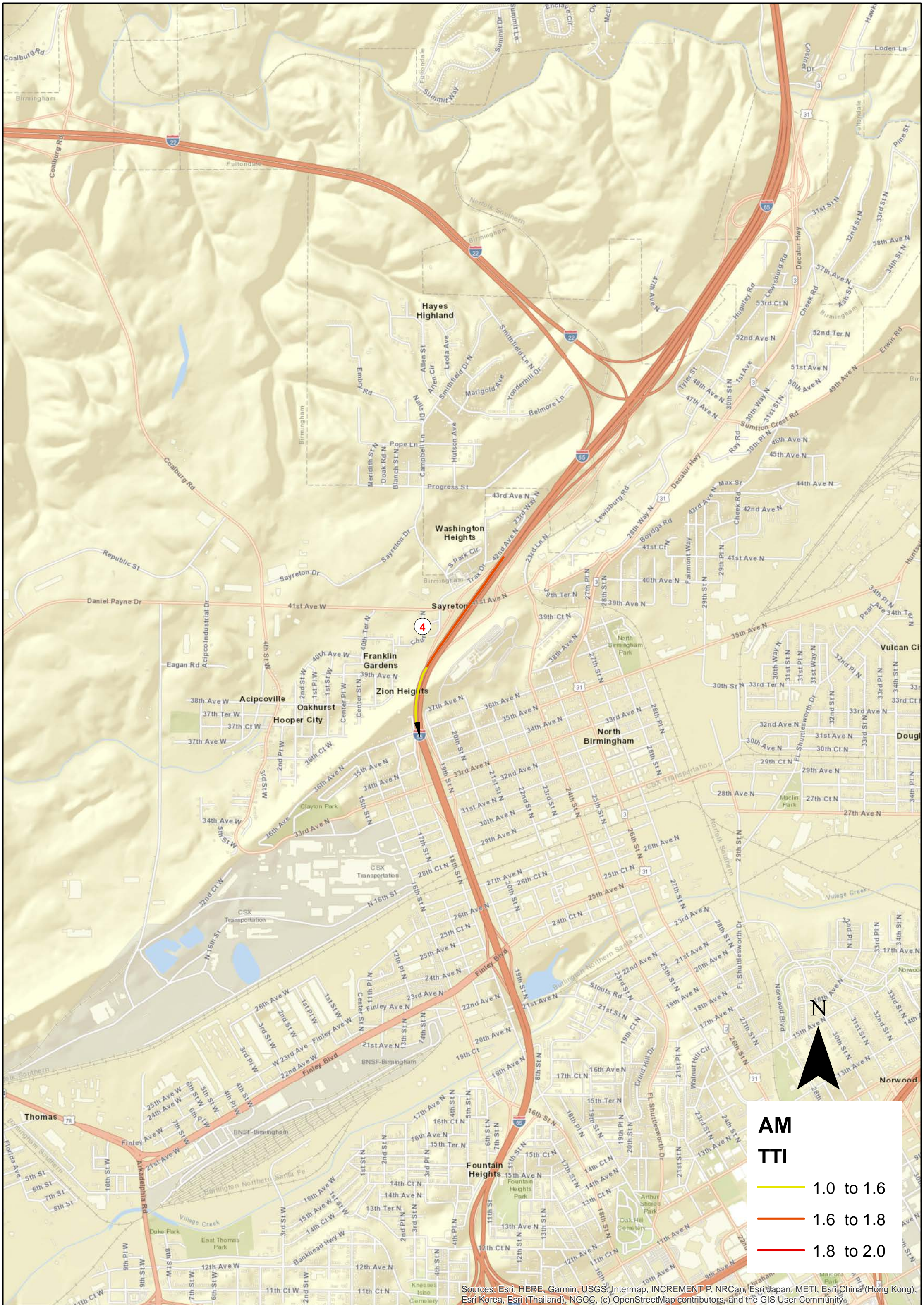


Sources: Esri, HERE, Garmin, USGS, Intermap, INCREMENT P, NRCan, Esri Japan, METI, Esri China (Hong Kong), Esri Korea, Esri (Thailand), NGCC, (c) OpenStreetMap contributors, and the GIS User Community



# Bottleneck Analysis for Birmingham MPO All Vehicles Freeway AM Peak (7-8AM) 2022

## Group 4



Sources: Esri, HERE, Garmin, USGS, Intermap, INCREMENT P, NRCan, Esri Japan, METI, Esri China (Hong Kong), Esri Korea, Esri (Thailand), NGCC, (c) OpenStreetMap contributors, and the GIS User Community.



# Bottleneck Analysis for Birmingham MPO All Vehicles Freeway AM Peak (7-8AM) 2022

## Group 5



Sources: Esri, HERE, Garmin, USGS, Intermap, INCREMENT P, NRCan, Esri Japan, METI, Esri China (Hong Kong), Esri Korea, Esri (Thailand), NGCC, (c) OpenStreetMap contributors, and the GIS User Community



## Birmingham MPO - 2022 and 2018 Interstate Bottlenecks - AM Peak Hour

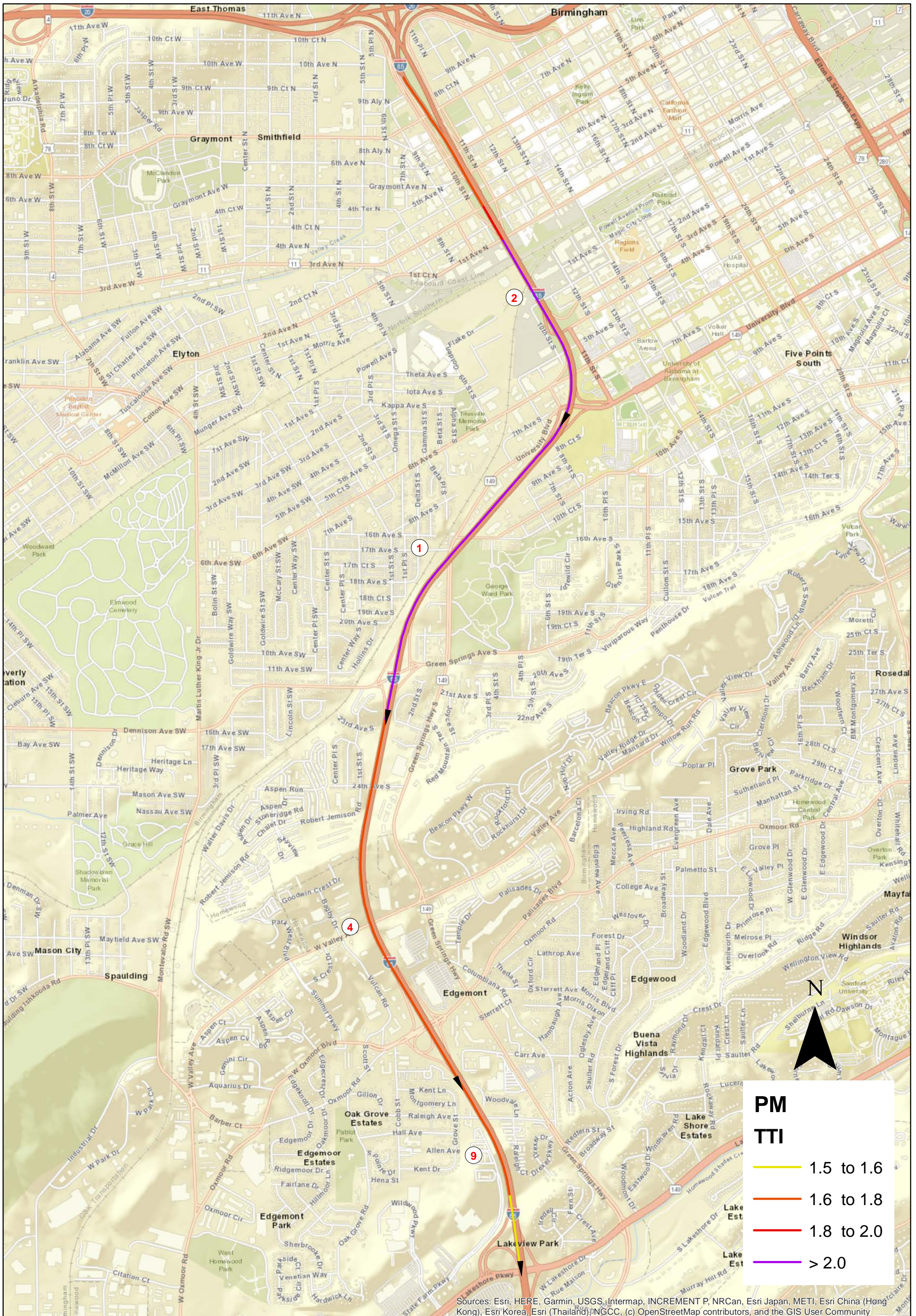
Group	Interstate	Interchange(s)	Direction	Posted Speed	2022 TTI*	2022 Average Peak Hour Speed	2018 TTI*	2018 Average Peak Hour Speed
1	I-65 N	US-31/Montgomery Hwy/Exit 252 to Alford Ave/Exit 254	N	60	1.78	<b>34</b>	2.51	<b>24</b>
2	I-65 S	6th Ave/Exit 260	S	60	1.68	<b>36</b>	1.4	<b>43</b>
3	I-59 S	Chalkville Mountain Rd/Exit 141	S	70	1.65	<b>42</b>	2.38	<b>29</b>
4	I-65 S	41st Ave/Exit 264 to 32nd Ave/33rd Ave/Exit 263	S	70	1.6	<b>44</b>	2.49	<b>28</b>
5	I-20 W	Airport Blvd/Exit 129	W	60	1.59	<b>38</b>	2.19	<b>27</b>

\* TTI is the Travel Time Index which is the Posted Speed divided by the Average Peak Hour Speed



# Bottleneck Analysis for Birmingham MPO All Vehicles Freeway PM Peak (5-6PM) 2022

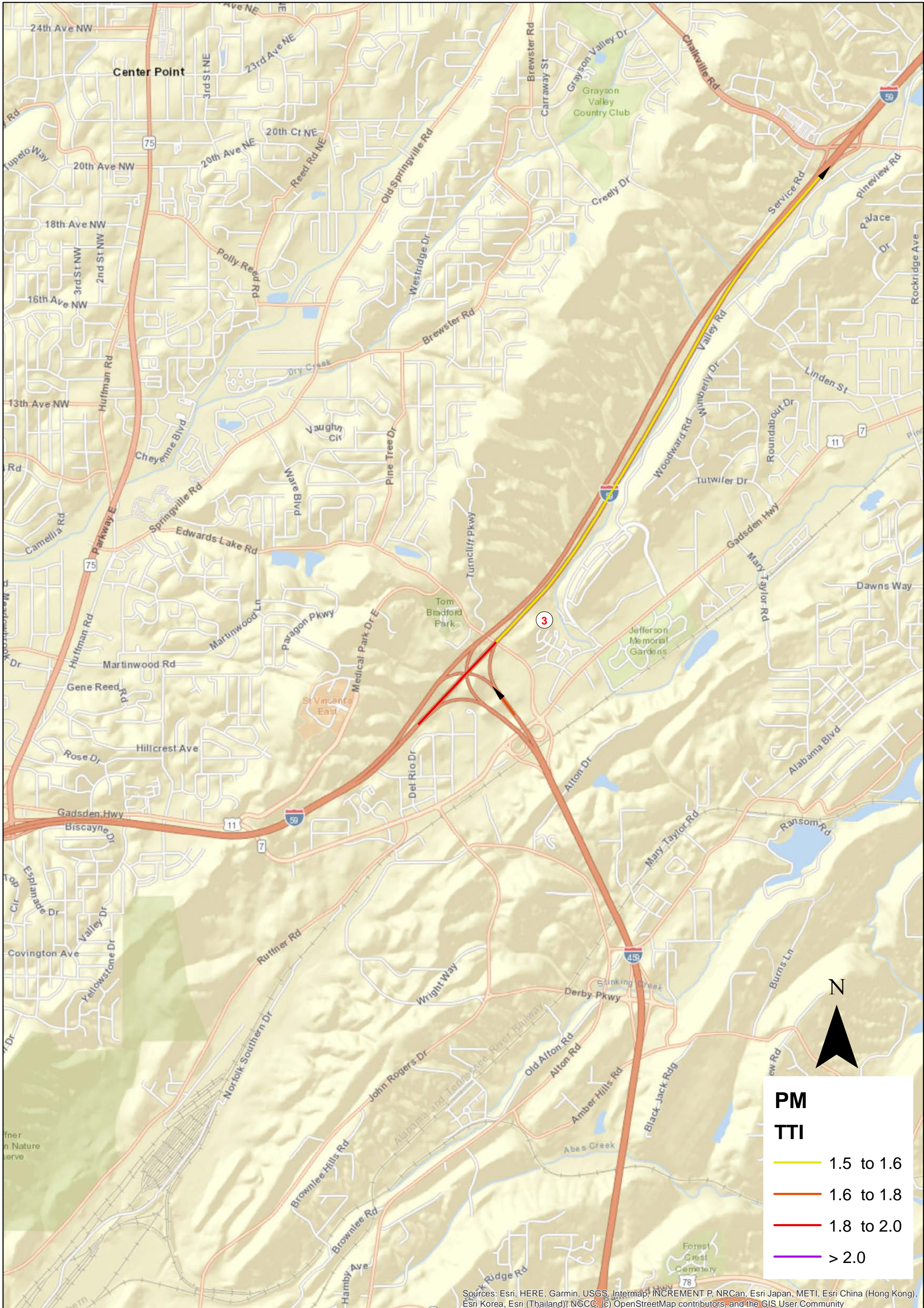
## Group1 & Group2 & Group4 & Group9





# Bottleneck Analysis for Birmingham MPO All Vehicles Freeway PM Peak (5-6PM) 2022

## Group3

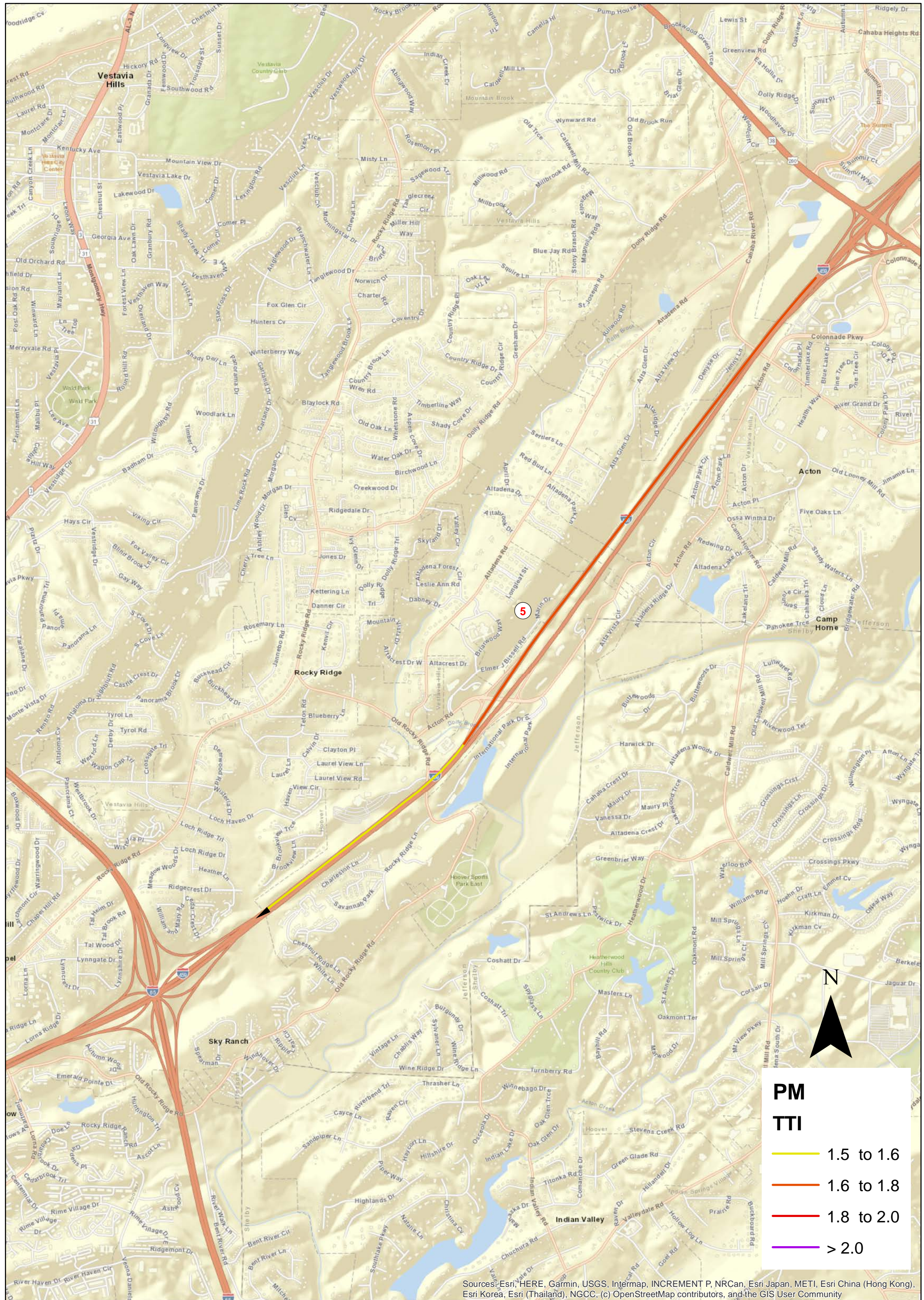


Sources: Esri, HERE, Garmin, USGS, Intermap, INCREMENT P, NRCan, Esri Japan, METI, Esri China (Hong Kong), Esri Korea, Esri (Thailand), NGCC, (c) OpenStreetMap contributors, and the GIS User Community



# Bottleneck Analysis for Birmingham MPO All Vehicles Freeway PM Peak (5-6PM) 2022

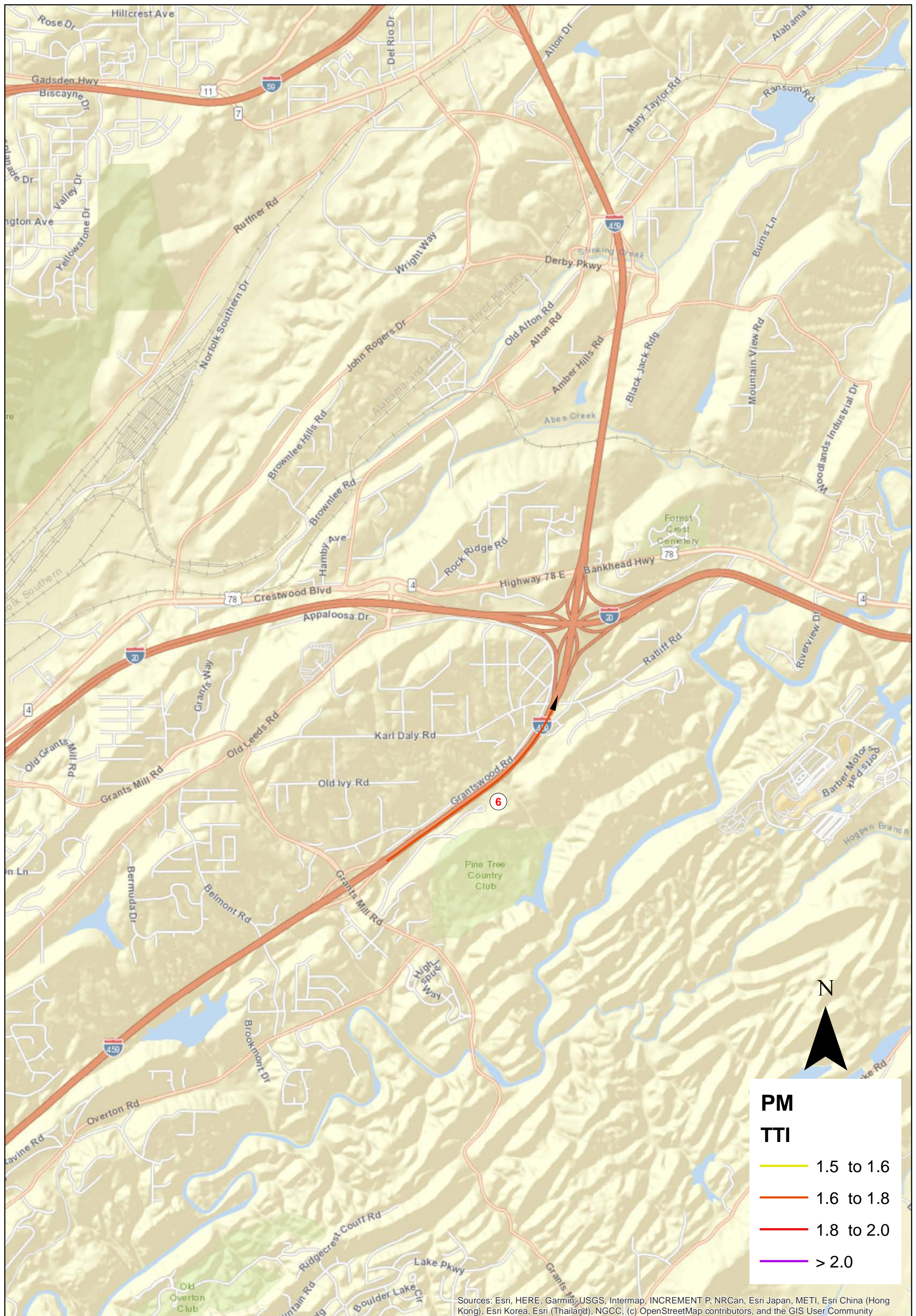
## Group5





# Bottleneck Analysis for Birmingham MPO All Vehicles Freeway PM Peak (5-6PM) 2022

## Group6

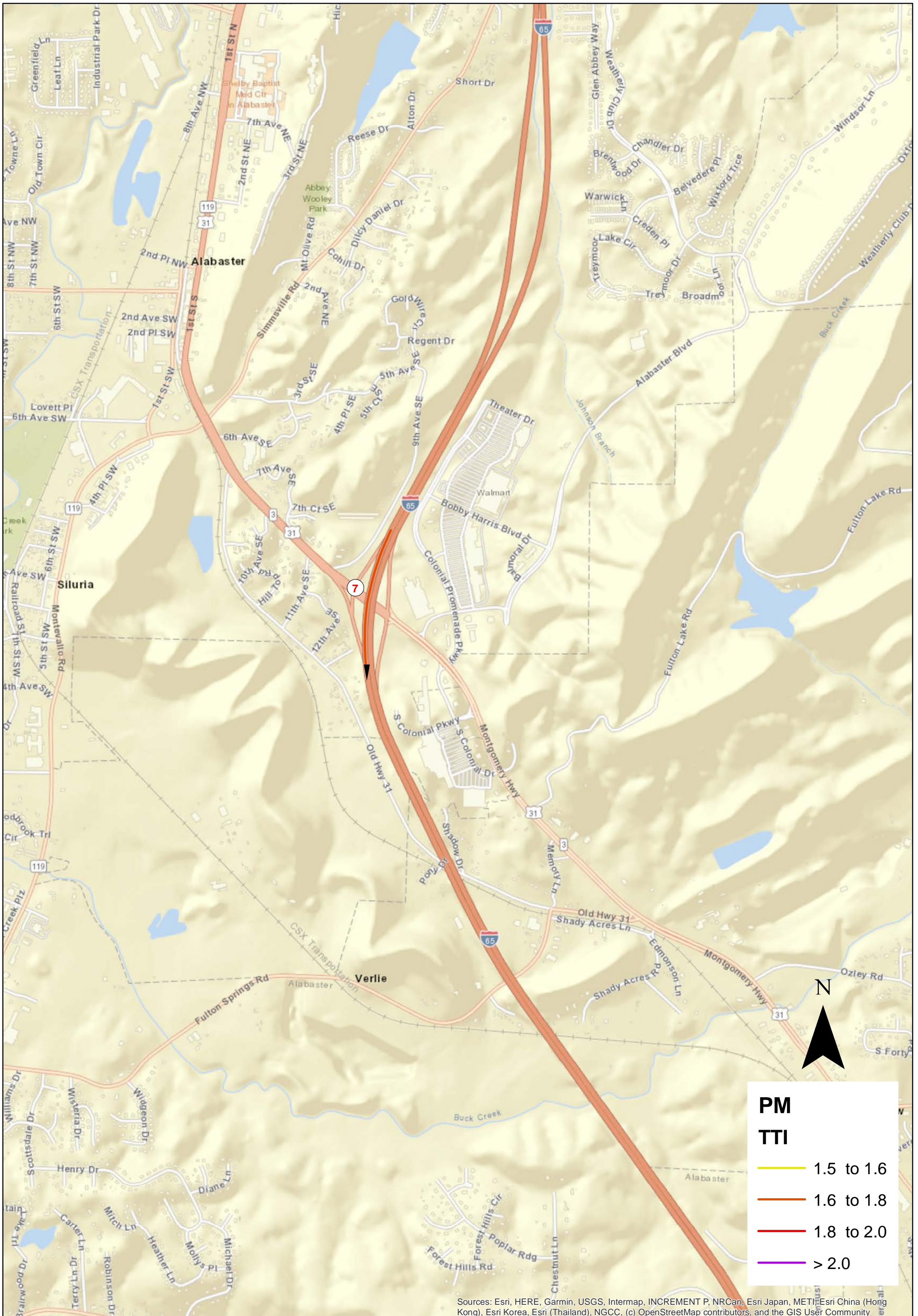


Sources: Esri, HERE, Garmin, USGS, Intermap, INCREMENT P, NRCan, Esri Japan, METI, Esri China (Hong Kong), Esri Korea, Esri (Thailand), NGCC, (c) OpenStreetMap contributors, and the GIS User Community



# Bottleneck Analysis for Birmingham MPO All Vehicles Freeway PM Peak (5-6PM) 2022

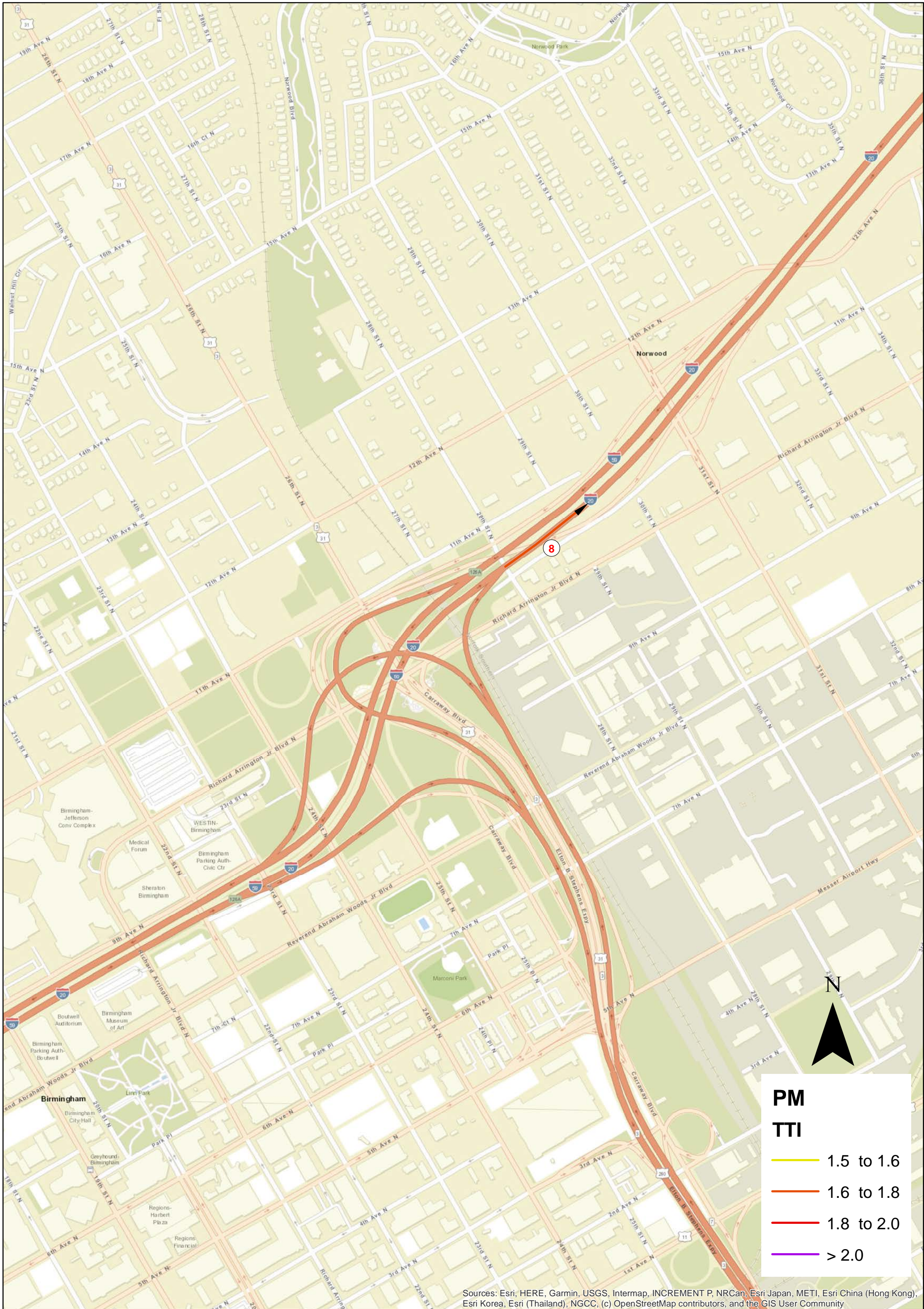
## Group7





# Bottleneck Analysis for Birmingham MPO All Vehicles Freeway PM Peak (5-6PM) 2022

## Group8



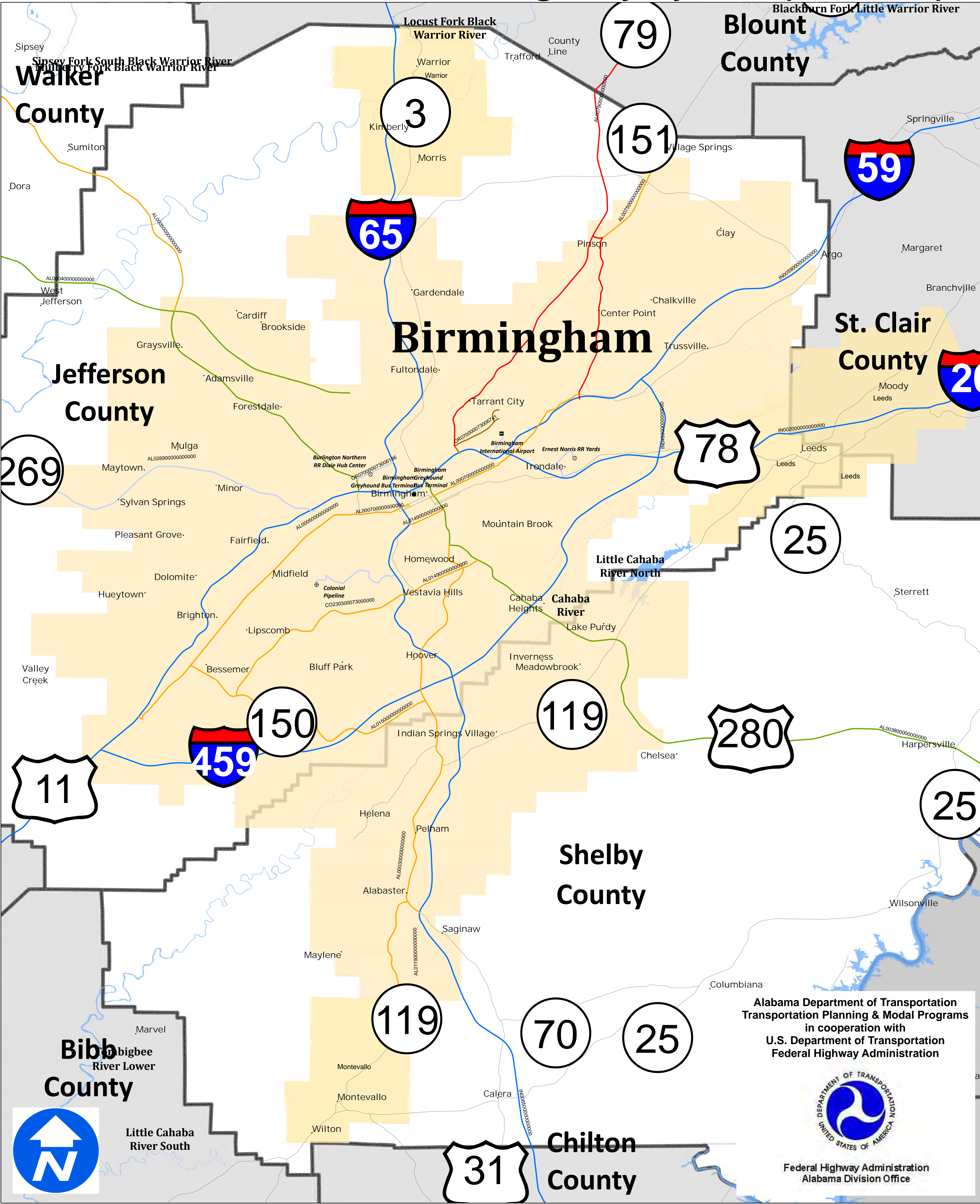


## Birmingham MPO - 2022 and 2018 Interstate Bottlenecks - PM Peak Hour

Group	Interstate	Interchange(s)	Direction	Posted Speed	2022 TTI*	2022 Average Peak Hour Speed	2018 TTI*	2018 Average Peak Hour Speed
1	I-65 S	AL-149/University Blvd/Exit 259 to Green Springs Ave/Exit 258	S	60	2.74	<b>22</b>	3.35	<b>18</b>
2	I-65 S	6th Ave/Exit 260 to AL-149/University Blvd/Exit 259	S	60	2.63	<b>23</b>	3.27	<b>18</b>
3	I-59 N / I-459 N	I-459/Exit 137 to Chalkville Mountain Rd/Exit 141 & I-59/Exit 33	N	70	1.85	<b>38</b>	3.16	<b>22</b>
4	I-65 S	Oxmoor Rd/Exit 256	S	60	1.77	<b>34</b>	2.37	<b>25</b>
5	I-459 S	Acton Rd/Exit 17 to I-65/Exit 15	S	70	1.64	<b>43</b>	1.92	<b>36</b>
6	I-459 N	I-20/Exit 29	N	70	1.72	<b>41</b>	1.56	<b>45</b>
7	I-65 S	US-31/Exit 238	S	70	1.67	<b>42</b>	1.25	<b>56</b>
8	I-20 E	31st St/Exit 126B	E	60	1.67	<b>36</b>	1.17	<b>51</b>
9	I-65 S	Lakeshore Dr/Exit 255	S	60	1.6	<b>38</b>	1.66	<b>37</b>

\* TTI is the Travel Time Index which is the Posted Speed divided by the Average Peak Hour Speed

# Alabama Enhanced National Highway System (MAP - 21)



Alabama Department of Transportation  
 Transportation Planning & Modal Programs  
 in cooperation with  
 U.S. Department of Transportation  
 Federal Highway Administration



Federal Highway Administration  
 Alabama Division Office

Eisenhower Interstate System (STRAHNET)	Department of Defense	Airport
Strategic Highway Network (STRAHNET)	Federal Lands	Intercity Bus Terminal
MAP-21 Other Principal Arterials	Census Urbanized Areas	Port Terminal
Other Principal Arterial	Census Small Urban Areas	Truck/Pipeline Terminal
Intermodal Connector	Water	Truck/Rail Facility
Major Strategic Highway Network Connector	County Boundary	
Non - NHS Route		

Miles

Kilometers



## AGENDA CONGESTION MANAGEMENT COMMITTEE

Wednesday, November 15, 2023 at 10:00 a.m.  
Zoom Virtual Meeting

1. **Post COVID-19 - Traffic Volumes and Crash Trends**
  - **Mike Kaczorowski (RPCGB)**
  
2. **Worst Freeway Bottlenecks**
  - a. **AM & PM Weekday Peak Hours**
  - b. **INRIX Data Available on All NHS Routes**
  - **Mike Kaczorowski (RPCGB)**
  
3. **ALDOT Updates on Programs and Projects**
  - **ALDOT**
  
4. **Other**
  - a. **Transition from Cube/Voyager to TransCAD – Update and timeline**
  - b. **New UAB Professor - Dr. Avinash Unnikrishnan**

*Anyone needing special accommodations shall contact RPCGB at least 3 business days in advance of meeting at:  
205-264-8473 or 205-264-8436*





## AGENDA CONGESTION MANAGEMENT COMMITTEE

Wednesday, November 15, 2023 at 10:00 a.m.  
Zoom Virtual Meeting

1. **Post COVID-19 - Traffic Volumes and Crash Trends**
  - **Mike Kaczorowski (RPCGB)**
  
2. **Worst Freeway Bottlenecks**
  - a. **AM & PM Weekday Peak Hours**
  - b. **INRIX Data Available on All NHS Routes**
  - **Mike Kaczorowski (RPCGB)**
  
3. **ALDOT Updates on Programs and Projects**
  - **ALDOT**
  
4. **Other**
  - a. **Transition from Cube/Voyager to TransCAD – Update and timeline**
  - b. **New UAB Professor - Dr. Avinash Unnikrishnan**

*Anyone needing special accommodations shall contact RPCGB at least 3 business days in advance of meeting at:  
205-264-8473 or 205-264-8436*