

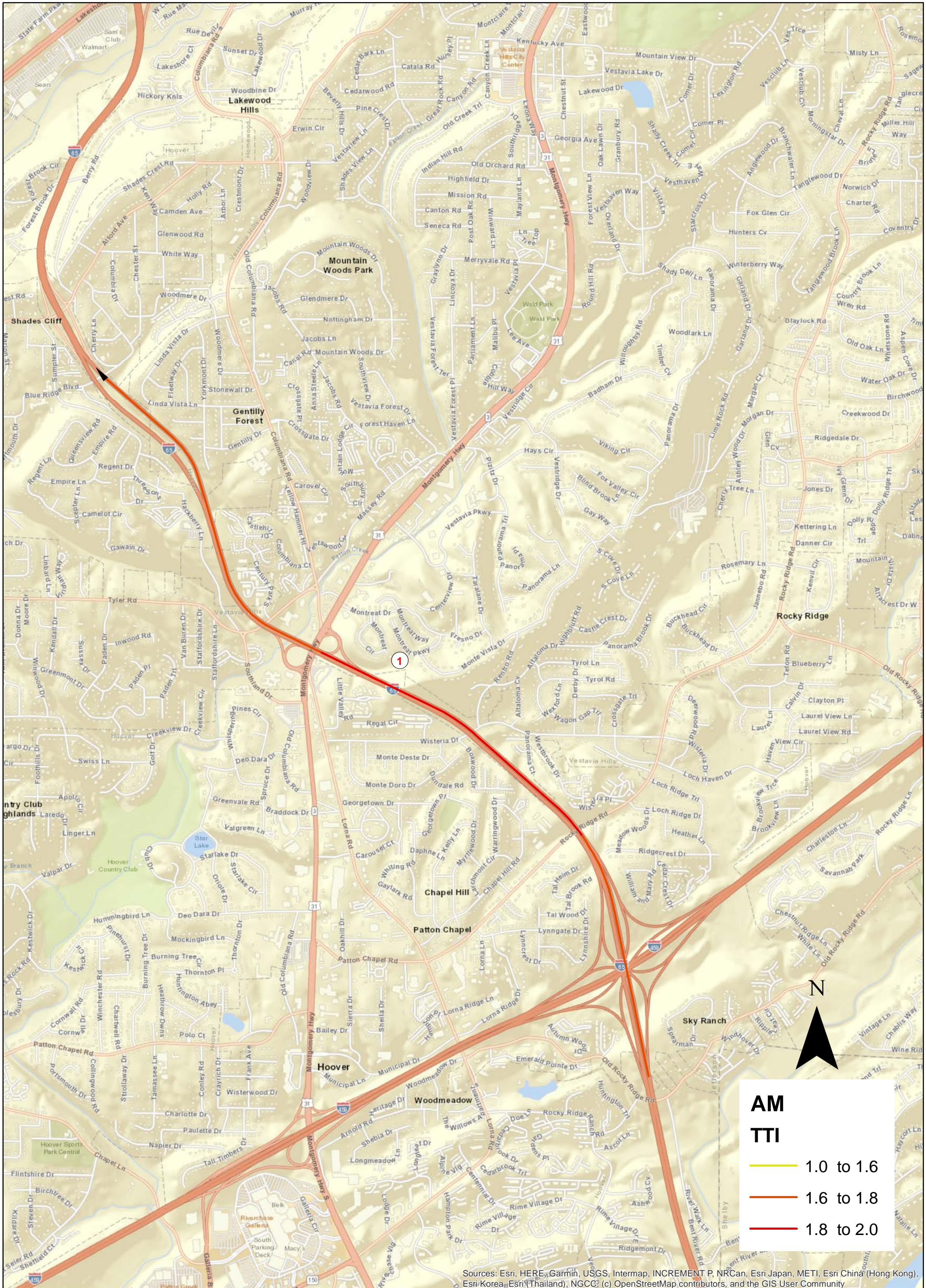
Birmingham MPO - 2022 and 2018 Interstate Bottlenecks - AM Peak Hour

Group	Interstate	Interchange(s)	Direction	Posted Speed	2022 TTI*	2022 Average Peak Hour Speed	2018 TTI*	2018 Average Peak Hour Speed
1	I-65 N	US-31/Montgomery Hwy/Exit 252 to Alford Ave/Exit 254	N	60	1.78	34	2.51	24
2	I-65 S	6th Ave/Exit 260	S	60	1.68	36	1.4	43
3	I-59 S	Chalkville Mountain Rd/Exit 141	S	70	1.65	42	2.38	29
4	I-65 S	41st Ave/Exit 264 to 32nd Ave/33rd Ave/Exit 263	S	70	1.6	44	2.49	28
5	I-20 W	Airport Blvd/Exit 129	W	60	1.59	38	2.19	27

* TTI is the Travel Time Index which is the Posted Speed divided by the Average Peak Hour Speed

Bottleneck Analysis for Birmingham MPO All Vehicles Freeway AM Peak (7-8AM) 2022

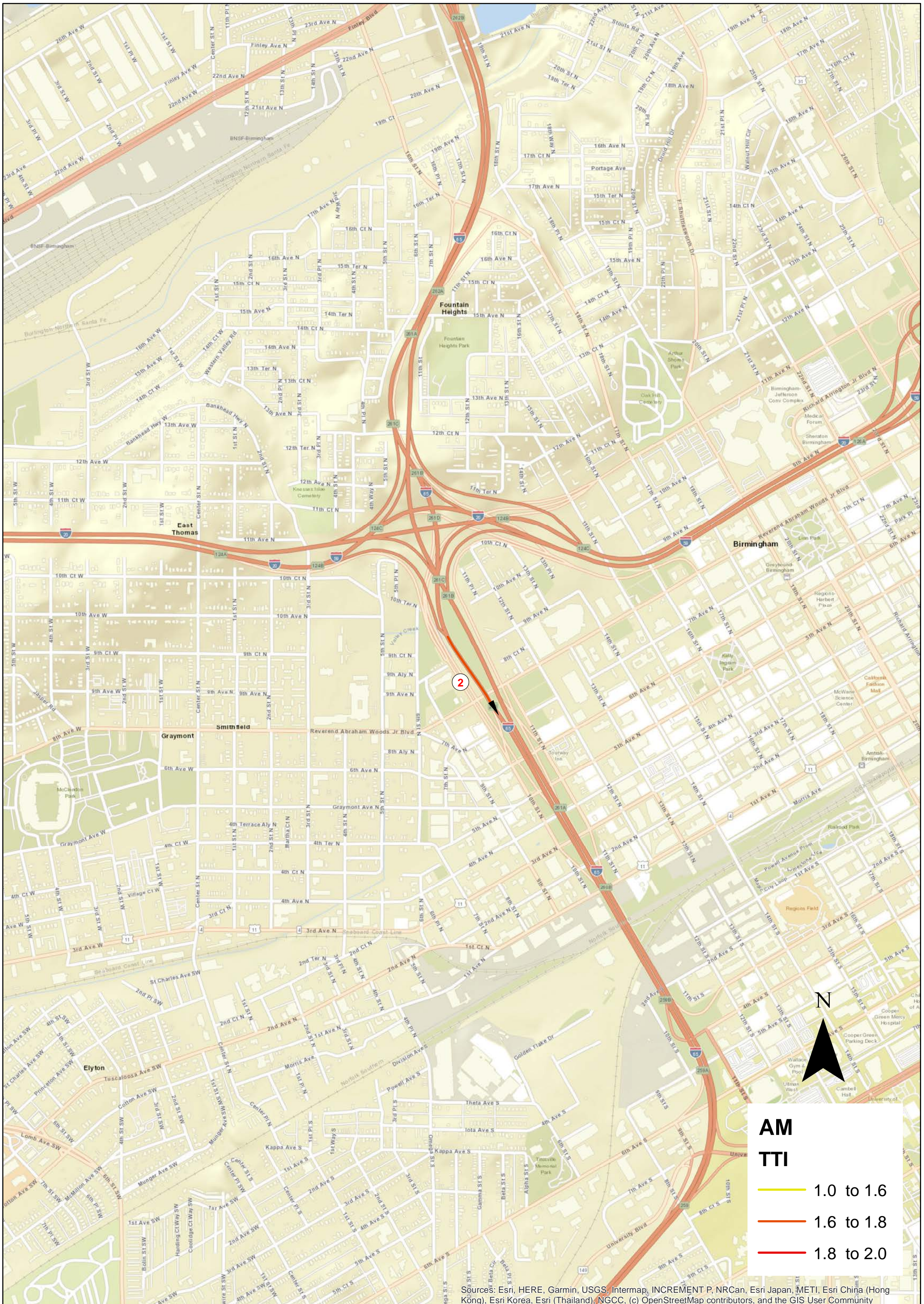
Group1



Sources: Esri, HERE, Garmin, USGS, Intermap, INCREMENT P, NRCan, Esri Japan, METI, Esri China (Hong Kong), Esri Korea, Esri (Thailand), NGCC, (c) OpenStreetMap contributors, and the GIS User Community

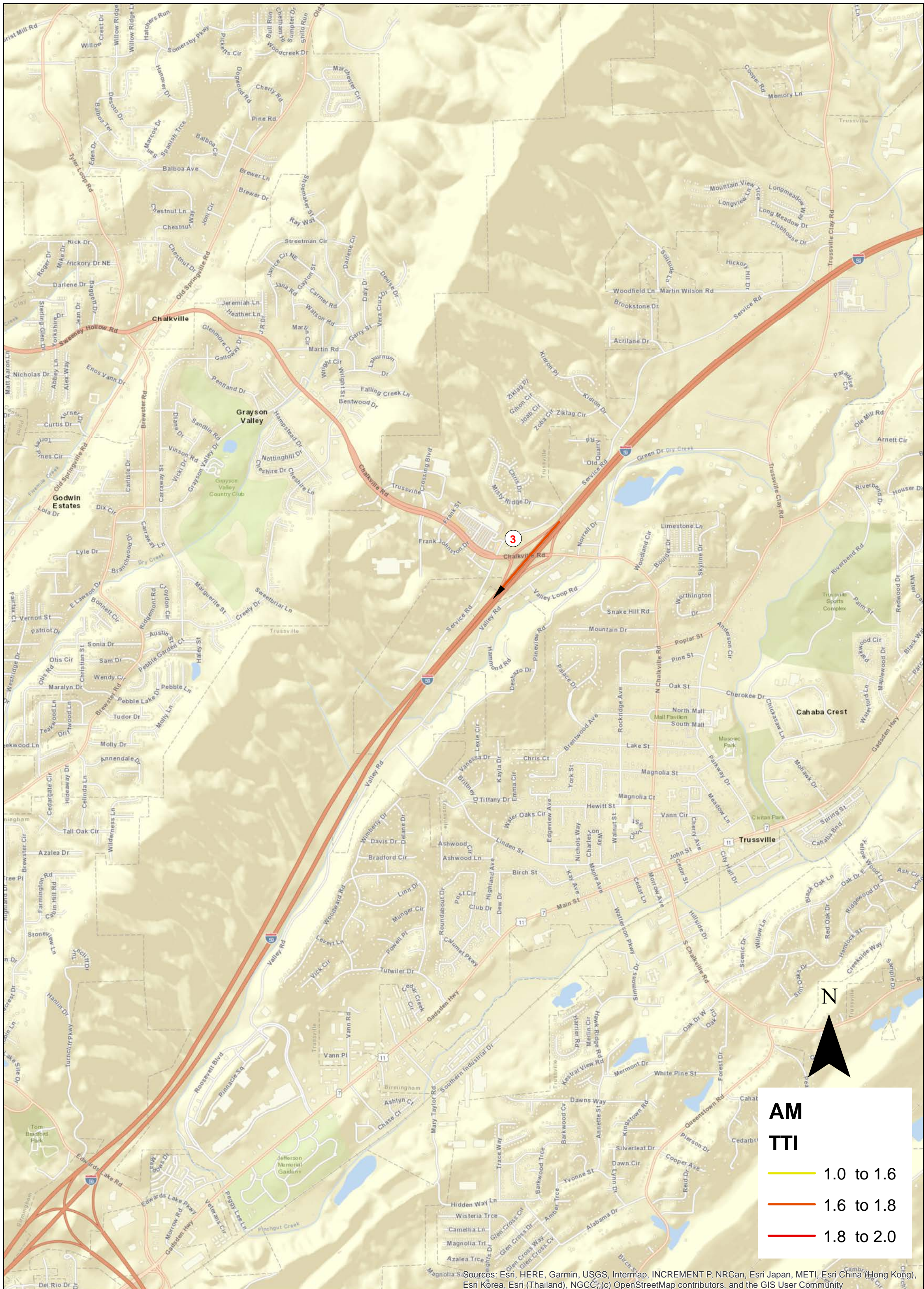
Bottleneck Analysis for Birmingham MPO All Vehicles Freeway AM Peak (7-8AM) 2022

Group2



Bottleneck Analysis for Birmingham MPO All Vehicles Freeway AM Peak (7-8AM) 2022

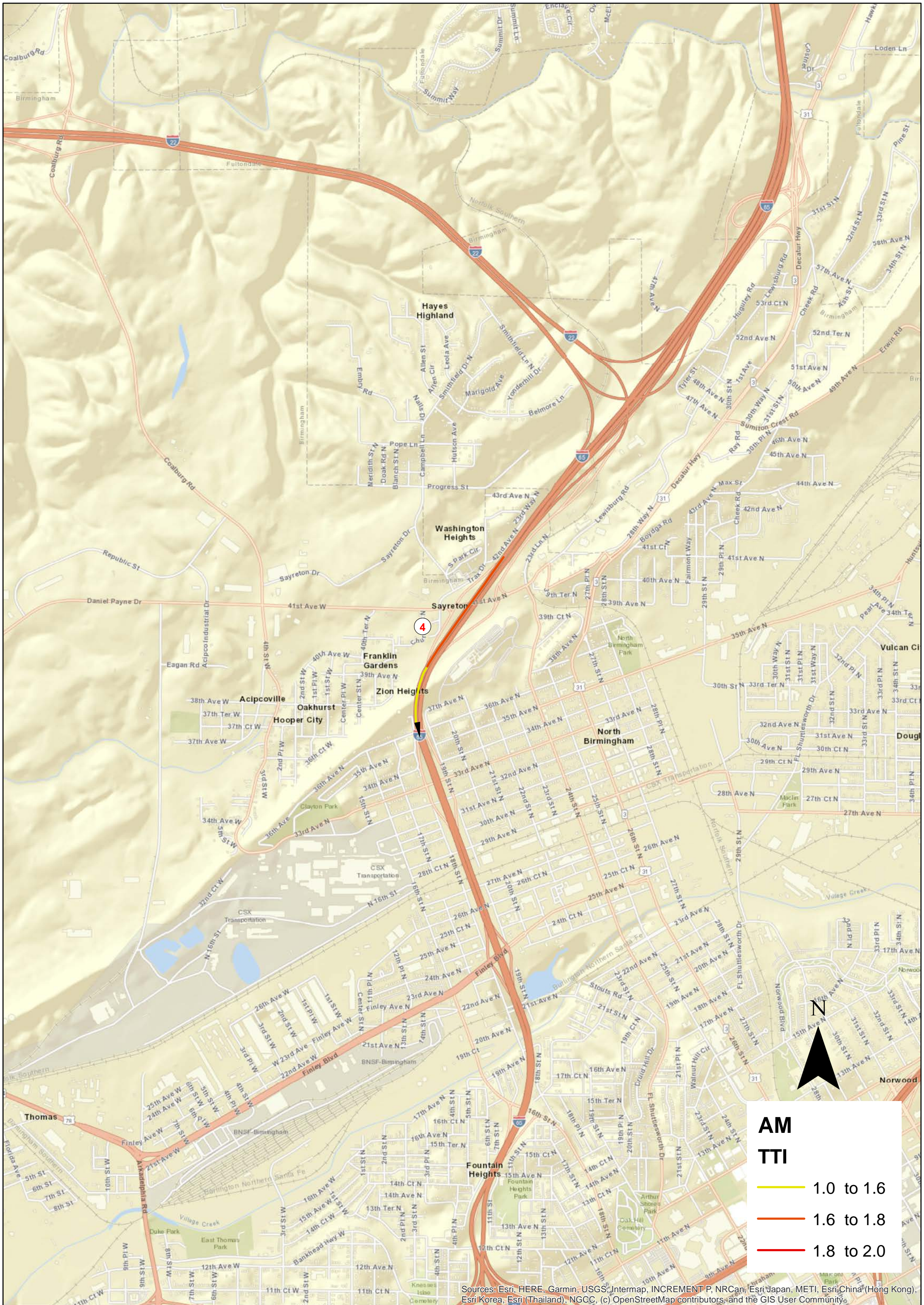
Group3



Sources: Esri, HERE, Garmin, USGS, Intermap, INCREMENT P, NRCan, Esri Japan, METI, Esri China (Hong Kong), Esri Korea, Esri (Thailand), NGCC, (c) OpenStreetMap contributors, and the GIS User Community

Bottleneck Analysis for Birmingham MPO All Vehicles Freeway AM Peak (7-8AM) 2022

Group4



Bottleneck Analysis for Birmingham MPO All Vehicles Freeway AM Peak (7-8AM) 2022

Group5



Sources: Esri, HERE, Garmin, USGS, Intermap, INCREMENT P, NRCan, Esri Japan, METI, Esri China (Hong Kong), Esri Korea, Esri (Thailand), NGCC, (c) OpenStreetMap contributors, and the GIS User Community

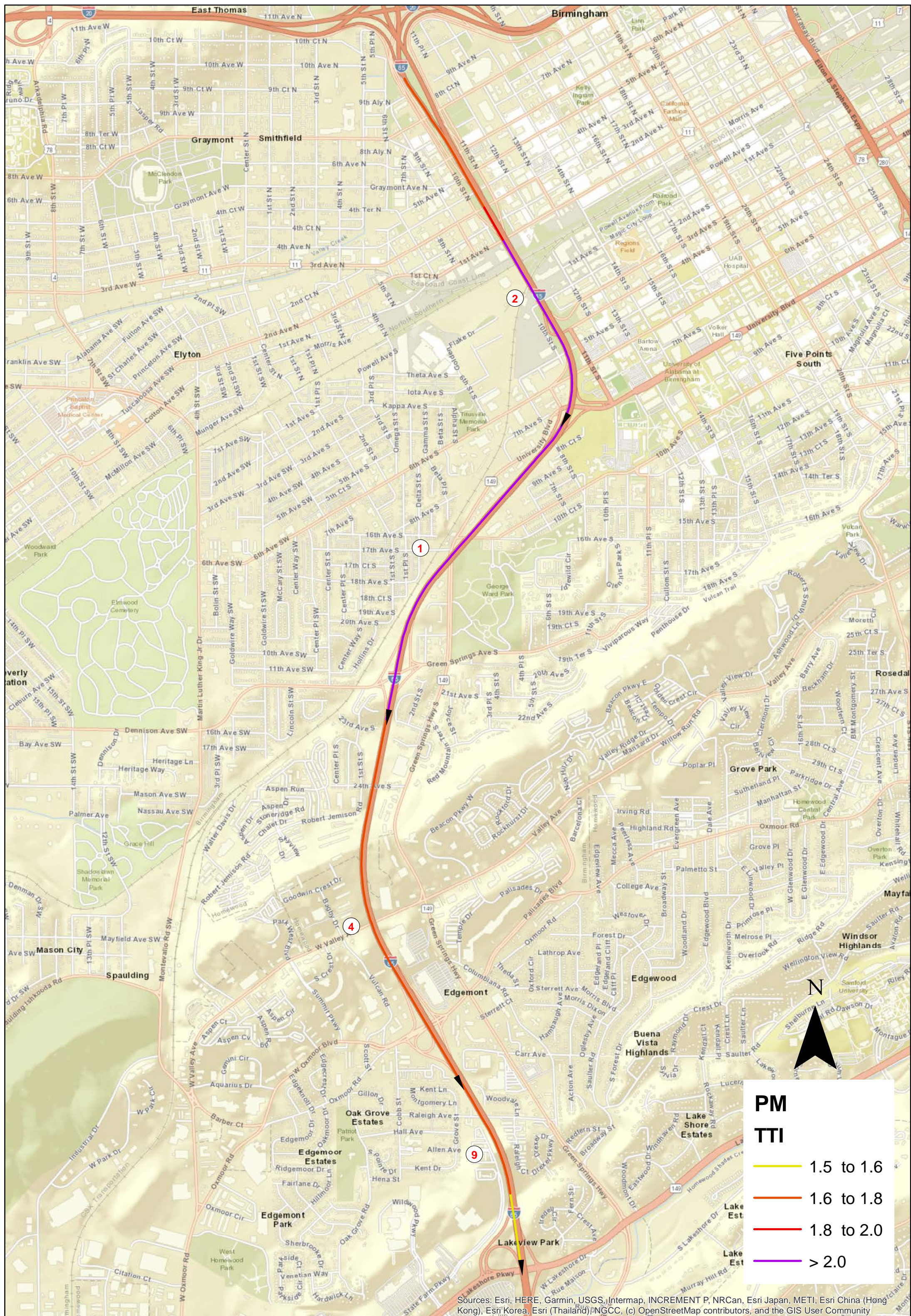
Birmingham MPO - 2022 and 2018 Interstate Bottlenecks - PM Peak Hour

Group	Interstate	Interchange(s)	Direction	Posted Speed	2022 TTI*	2022 Average Peak Hour Speed	2018 TTI*	2018 Average Peak Hour Speed
1	I-65 S	AL-149/University Blvd/Exit 259 to Green Springs Ave/Exit 258	S	60	2.74	22	3.35	18
2	I-65 S	6th Ave/Exit 260 to AL-149/University Blvd/Exit 259	S	60	2.63	23	3.27	18
3	I-59 N / I-459 N	I-459/Exit 137 to Chalkville Mountain Rd/Exit 141 & I-59/Exit 33	N	70	1.85	38	3.16	22
4	I-65 S	Oxmoor Rd/Exit 256	S	60	1.77	34	2.37	25
5	I-459 S	Acton Rd/Exit 17 to I-65/Exit 15	S	70	1.64	43	1.92	36
6	I-459 N	I-20/Exit 29	N	70	1.72	41	1.56	45
7	I-65 S	US-31/Exit 238	S	70	1.67	42	1.25	56
8	I-20 E	31st St/Exit 126B	E	60	1.67	36	1.17	51
9	I-65 S	Lakeshore Dr/Exit 255	S	60	1.6	38	1.66	37

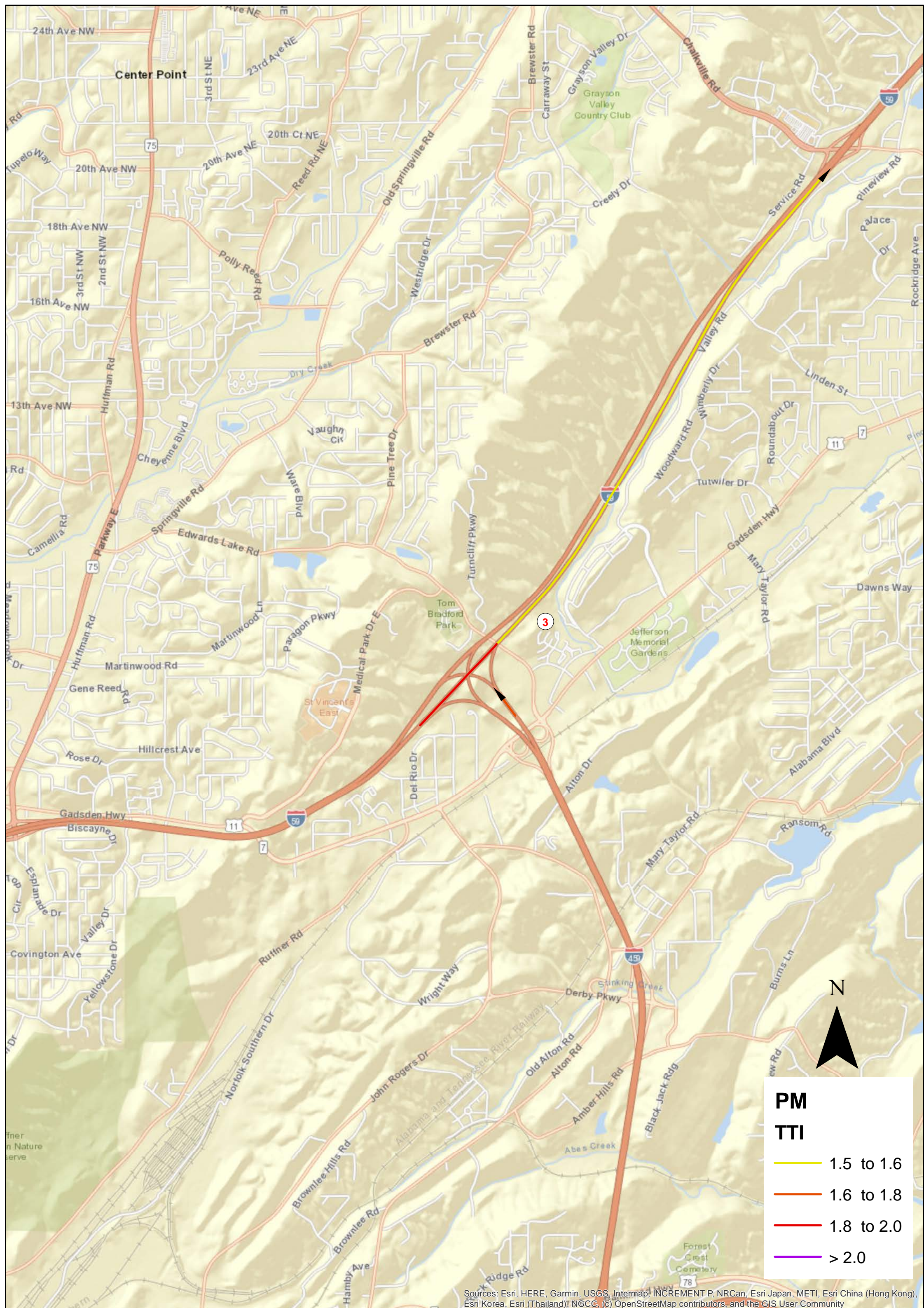
* TTI is the Travel Time Index which is the Posted Speed divided by the Average Peak Hour Speed

Bottleneck Analysis for Birmingham MPO All Vehicles Freeway PM Peak (5-6PM) 2022

Group1 & Group2 & Group4 & Group9



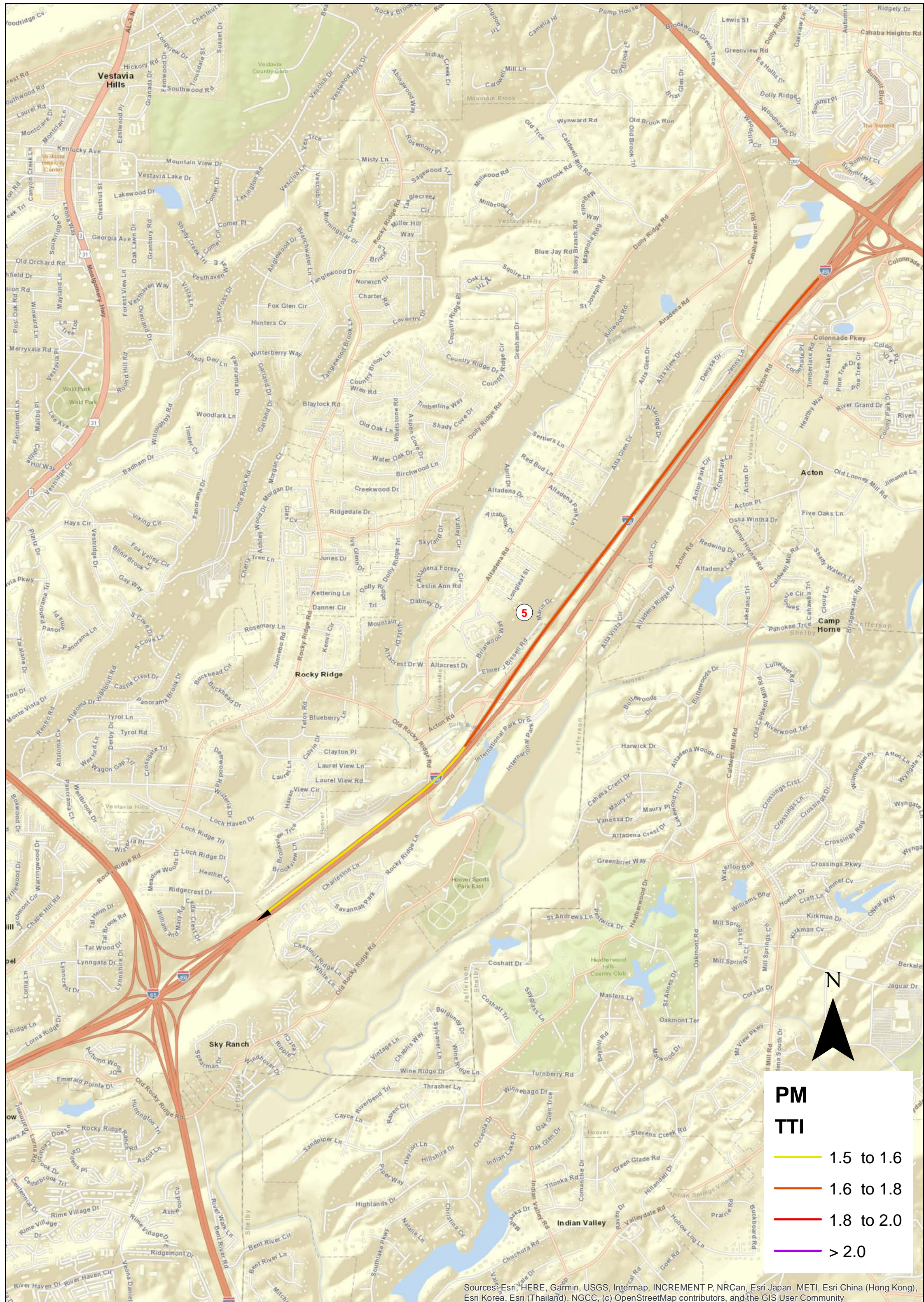
Bottleneck Analysis for Birmingham MPO All Vehicles Freeway PM Peak (5-6PM) 2022 Group3



Sources: Esri, HERE, Garmin, USGS, Intermap, INCREMENT P, NRCan, Esri Japan, METI, Esri China (Hong Kong), Esri Korea, Esri (Thailand), NGCC, (c) OpenStreetMap contributors, and the GIS User Community

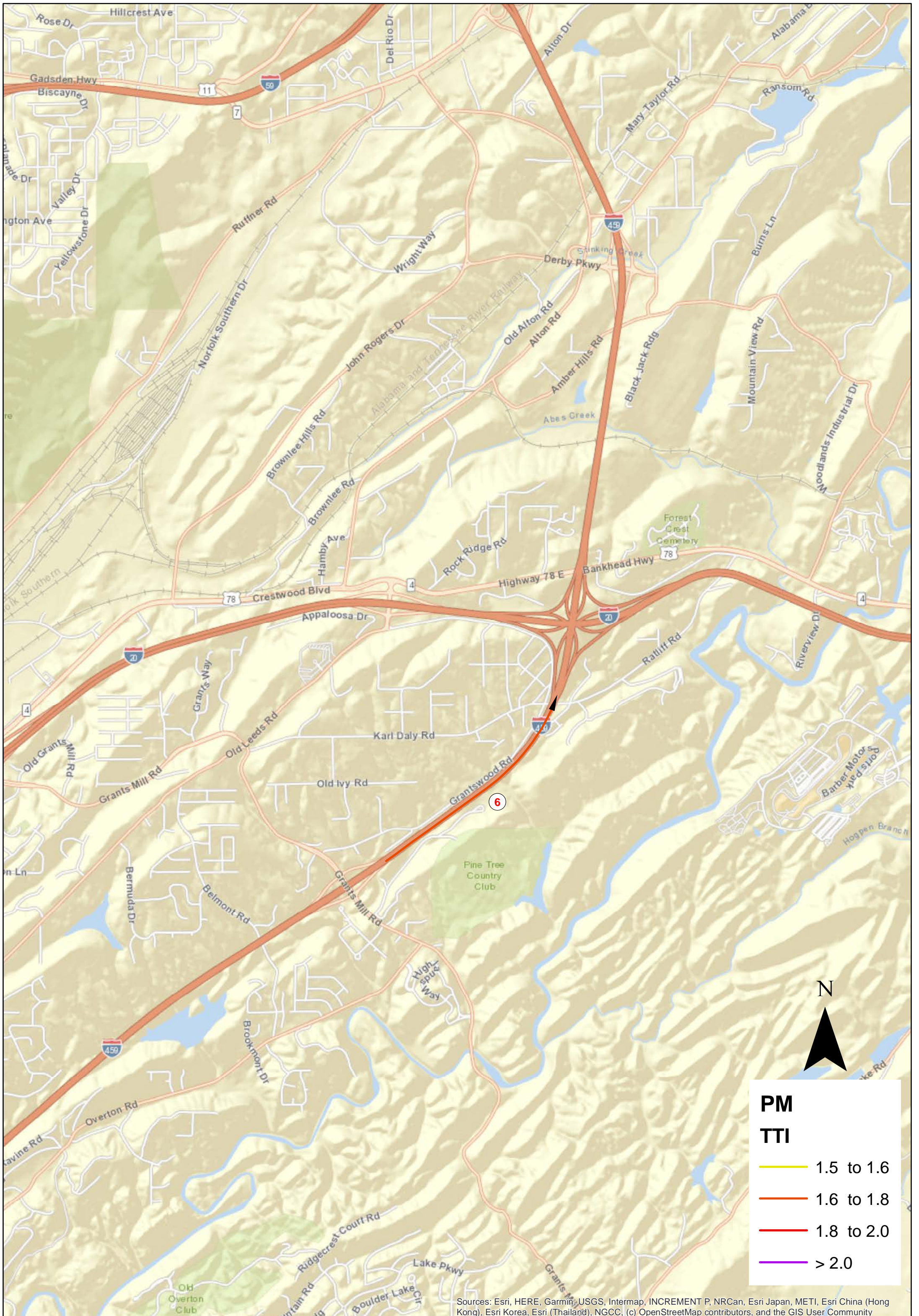
Bottleneck Analysis for Birmingham MPO All Vehicles Freeway PM Peak (5-6PM) 2022

Group5



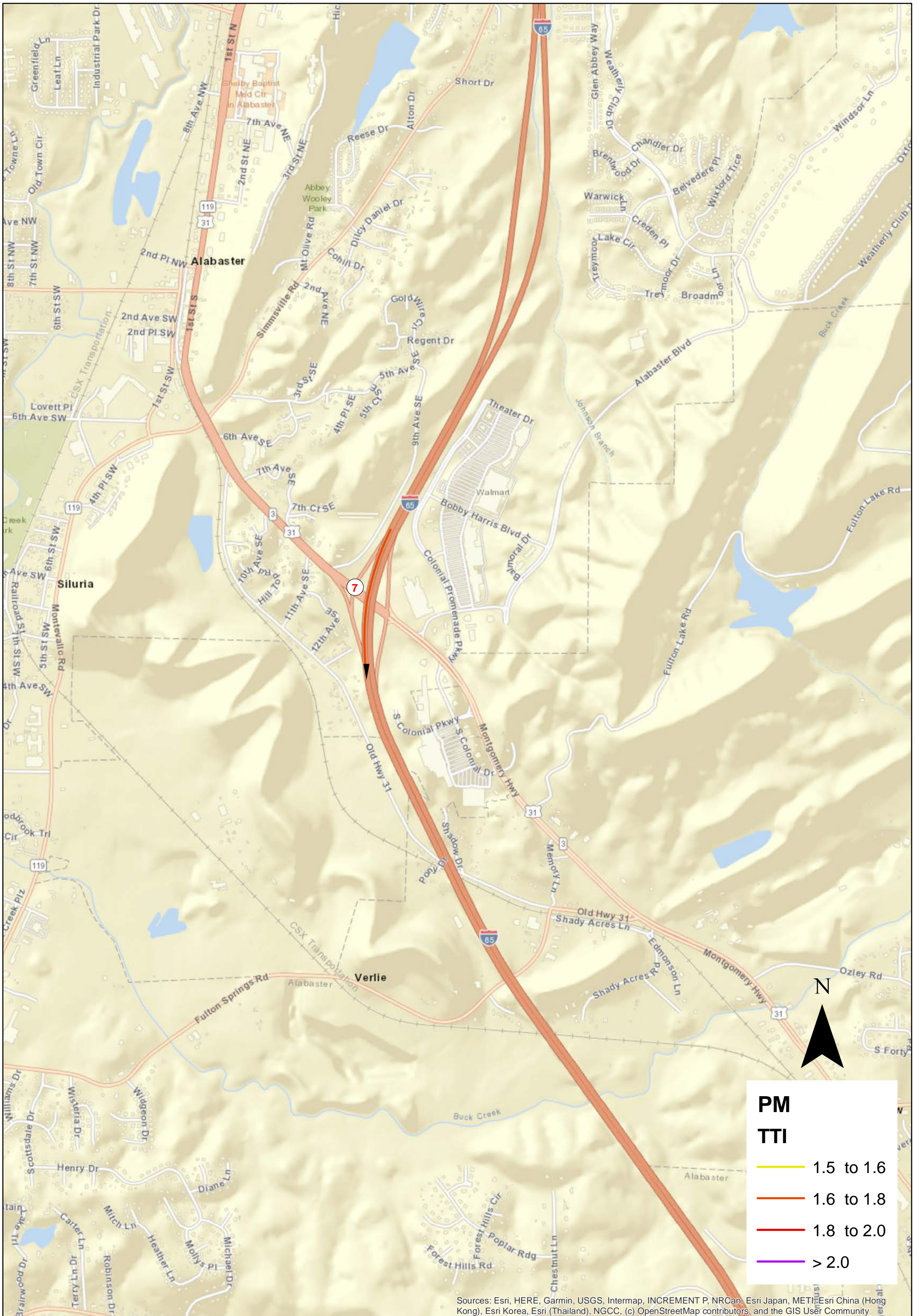
Bottleneck Analysis for Birmingham MPO All Vehicles Freeway PM Peak (5-6PM) 2022

Group6



Bottleneck Analysis for Birmingham MPO All Vehicles Freeway PM Peak (5-6PM) 2022

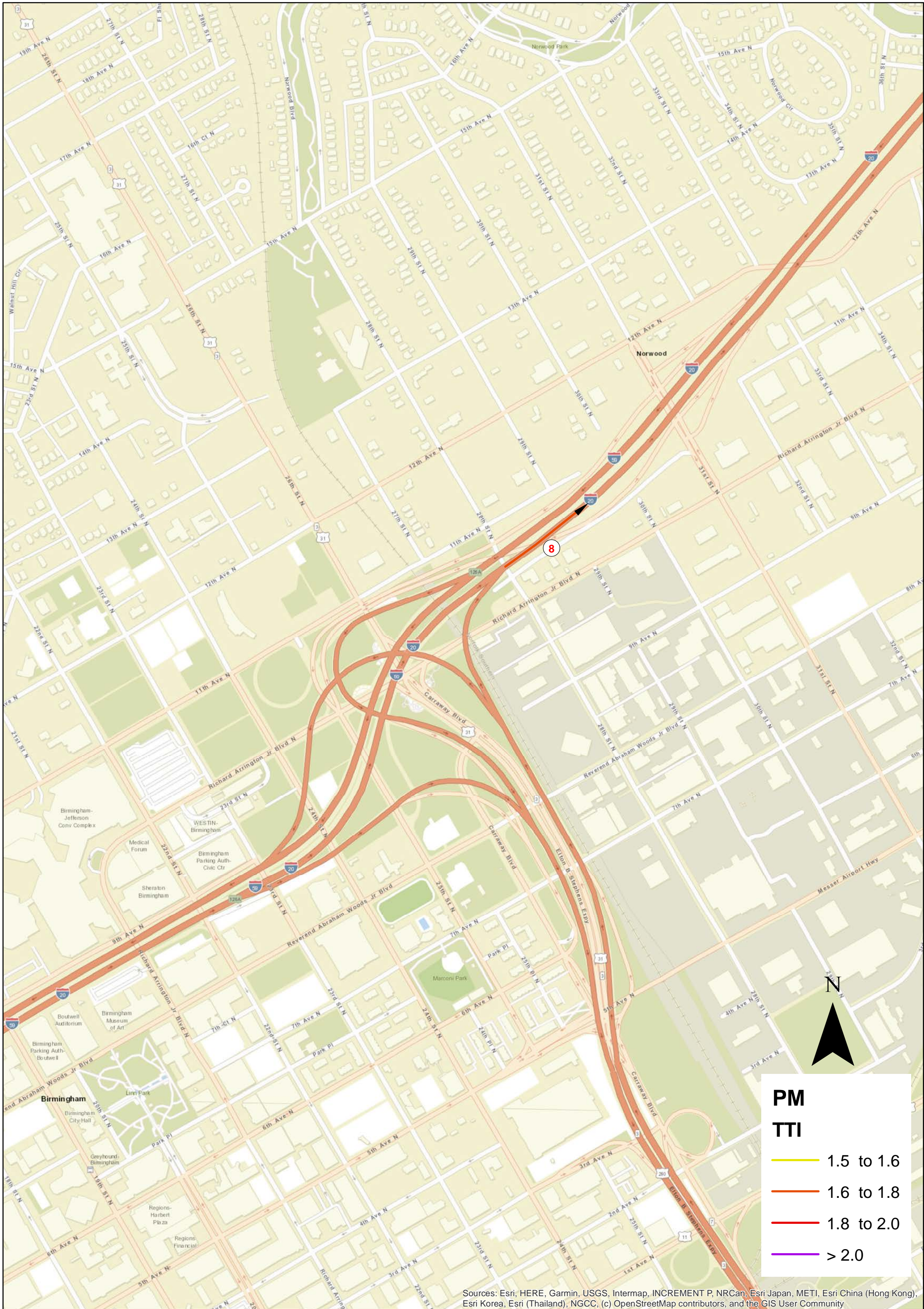
Group7



Sources: Esri, HERE, Garmin, USGS, Intermap, INCREMENT P, NRCan, Esri Japan, METI, Esri China (Hong Kong), Esri Korea, Esri (Thailand), NGCC, (c) OpenStreetMap contributors, and the GIS User Community

Bottleneck Analysis for Birmingham MPO All Vehicles Freeway PM Peak (5-6PM) 2022

Group8



Sources: Esri, HERE, Garmin, USGS, Intermap, INCREMENT P, NRCan, Esri Japan, METI, Esri China (Hong Kong), Esri Korea, Esri (Thailand), NGCC, (c) OpenStreetMap contributors, and the GIS User Community