

CONNECTIONS

A newsletter from the
Regional Planning Commission of Greater Birmingham

June 2011

In This Issue

RPCGB Assists in Tornado Disaster Recovery

RPCGB to Host Second Community Forum for Study

RPCGB to Host Scenario Planning Workshop

Bike-to-Work Day a Success!

Transportation Improvement Program Amendments

[Join Our Mailing List!](#)

CALENDAR OF EVENTS

[RPCGB Program Budget Committee Meeting](#)
CANCELED

[Metropolitan Planning Organization Meeting](#)
CANCELED

[RPCGB Board of Directors Meeting](#)
CANCELED

[Transportation Citizens Committee Meeting](#)
June 15, 2011
RPCGB Office
9:00 am, 1st Floor Conf. Rm.

[Transportation Technical Committee Meeting](#)
June 22, 2011
RPCGB Office
10:00 am, 1st Floor Conf. Rm.

[MPO Subcommittee Meeting](#)
June 23, 2011
RPCGB Office
1:30 pm, 1st Floor Conf. Rm.

[RPCGB Finance Committee](#)
July 6, 2011
RPCGB Office
9:00 am, 1st Floor Conf. Rm.

RPCGB Assists in Tornado Disaster Recovery



Destruction in Pleasant Grove

The April 27 tornadoes left many homes and businesses destroyed in the RPCGB's six county region. The Commission is actively assisting in the rebuilding efforts in several different areas and has created a [section](#) on the RPCGB website dedicated to regional recovery.

Employees and employers looking to make commuting to and from work a little easier in the affected areas can take advantage of the CommuteSmart program. CommuteSmart's Ridematching database allows individuals to find others looking to share a commute, and living and/or working in Jefferson and Shelby Counties. The program is free and it's easy for individuals to get started. Individuals can sign up at www.commutessmart.org or call 1-87-RIDEMATCH for further assistance.

Many businesses were hit hard by the tornadoes. The RPCGB provides a revolving loan fund that can assist in getting the region's employers back on their feet. The RPCGB will work with businesses to provide very flexible terms and interest rates given the difficulties faced during the rebuilding process. To find out how you can take advantage of this opportunity, visit the [revolving loan fund](#) section or call Yvonne Murray at 264-8428.

The RPCGB is known for its community planning expertise. The Commission can provide [community planning](#) assistance, including comprehensive and master plans to municipalities

For meeting information, including postings of any meeting notices and cancellations please visit the [RPCGB website](#).

looking to rebuild their communities. Our team of community planners can assess the needs of each affected municipality to determine the best course of action. The RPCGB can also provide mapping assistance to affected communities.

We all must work together to rebuild and make this region stronger than before. If your area was affected by the recent tornadoes and you need assistance with community planning, mapping, business loans or workplace transportation assistance, please contact us using our [contact form](#) or call 205-251-8139 with any questions.

RPCGB to Host Second Community Forum for Study



The RPCGB, along with its consultant team led by Atkins, is conducting the second Community Forum for the **Southwest Corridor Transit Study** on Thursday, June 23. The study is charged with examining premium transit alternatives along a 22-mile long corridor that extends from downtown Birmingham to the Jefferson/Tuscaloosa County Line. The study is

focused on identifying the most practical transit service, and land use and economic development potential. The study will look for opportunities to reshape communities and identify retail, industrial, and residential reinvestment strategies.

The study will consider a range of transit options from express bus and bus rapid transit (BRT) services to rail-based transit. A number of potential alignments for improved transit services also will be evaluated, including looking at all existing and abandoned transportation facilities running through the length of the corridor. The varied character of the study area - from the downtown urban area, older industrial districts, mature residential communities, established suburbs, historic districts such as the Bessemer downtown, and the developing suburban fringe to include the emerging transportation and warehousing district near McCalla - presents many opportunities for development served by quality transit options.

The forum will take place during a three-day workshop at the Fairfield Civic Center. A study team will conduct closed sessions with working groups focused on transit, community development, economic development and other study-related interests. The general public is invited to attend a public session on June 23 to review elements of the workshop and overall study information. Held in an open house format, the public can attend anytime from 4:00 pm to 8:00 pm, with interactive sessions occurring at 5:00 pm and 6:30 pm to provide participants an opportunity to give input on the vision and goals for the study.

For additional information, please visit the [project website](#) , or contact Darrell L. Howard, the Southwest Corridor Transit Study's project manager, at DHoward@rpcgb.org.

MEETING DETAILS:

Thursday, June 23, 2011

Fairfield Civic Center

6509 East J. Oliver Boulevard

Fairfield, AL 35064-1836

4:00-8:00 pm

Participants can feel free to drop in anytime during the meeting hours and remain for as long as they would like. There will be project presentations at 5:00 pm and 6:30 pm, along with an interactive exercise for participants to provide input. Refreshments and snacks will be served.

RPCGB to Host Scenario Planning Workshop

SAVE THE DATE:

Scenario Planning: A Framework to Guide Transportation System Investments

July 28, 2011

8:00 am to 4:30 pm

The Federal Highway Administration (FHWA), in partnership with the RPCGB, is sponsoring a one-day Scenario Planning Workshop for community leaders. The workshop, entitled ***Scenario Planning: Creating a Framework to Guide Transportation System Investments***, will be held on Thursday, July 28, 2011 from 8:00 am to 4:30 pm at the RPCGB offices. Please make plans to attend. Additional details will be provided in the next few weeks.

This Scenario Planning Workshop is a first step in updating the Birmingham Regional Transportation Plan. As a community leader, the RPCGB is seeking your assistance to better understand and address the physical, socioeconomic, and cultural changes that the region is experiencing. The scenario planning workshop will provide guidance for developing the planning framework for the region's transportation system. The scenario planning workshop will enable the region's elected, business, and community leaders to provide direct input on the Birmingham Regional Transportation Planning process.

To reserve a seat, please visit <http://birminghamscenarioplanning.eventbrite.com>

For immediate questions, contact: Darrell Howard, RPCGB Deputy Director of Planning, dhoward@rpcgb.org

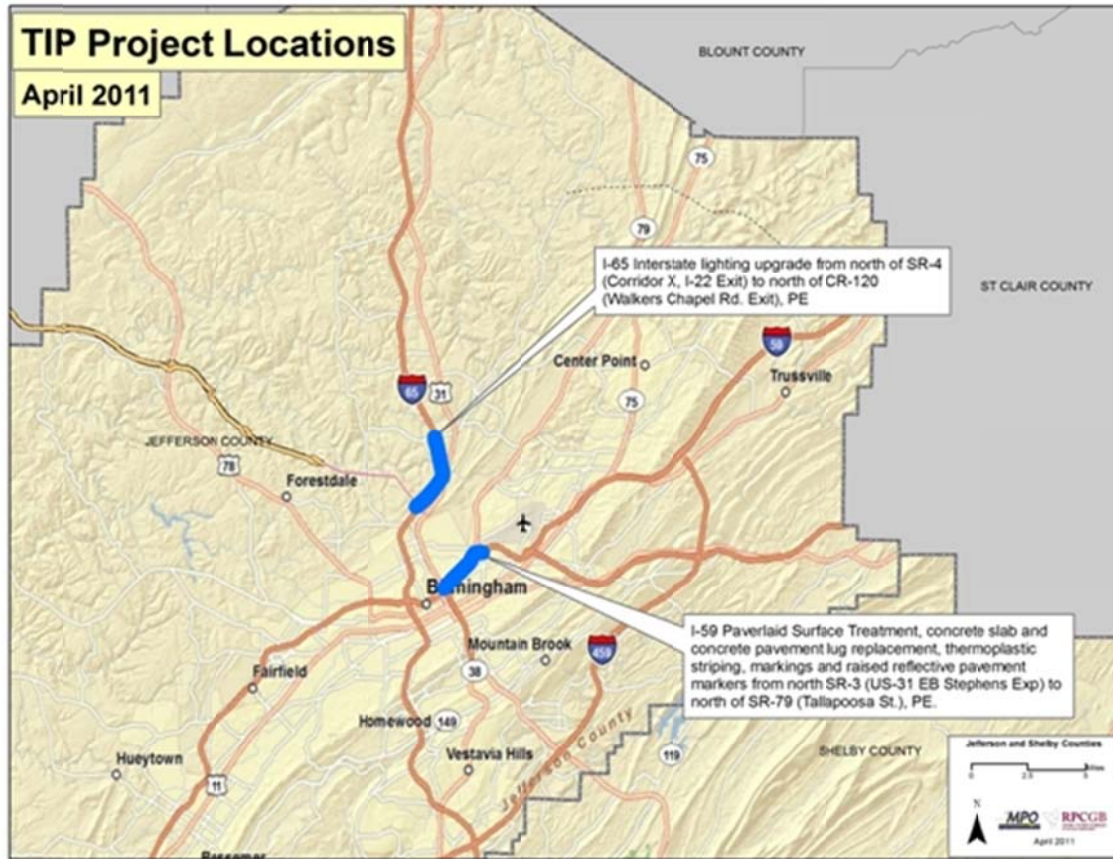
Bike-to-Work Day a Success!

Over 60 cyclists took part in the **2011 Bike-to-Work Day** on May 20. The annual ride to raise awareness for the benefits of active transportation started and finished in Railroad Park. Participants received commemorative t-shirts for taking part. Find out more about Bike-to-Work Day on the [RPCGB website](#).

HIGHLIGHTS FROM BIKE-TO-WORK DAY



Transportation Improvement Program Amendments



CONNECTIONS is brought to you by the Regional Planning Commission of Greater Birmingham
Find out more at www.rpcgb.org

