

SHELBY COUNTY, ALABAMA

Median Household Income by Census Tract

Legend

Census Tracts (2000)

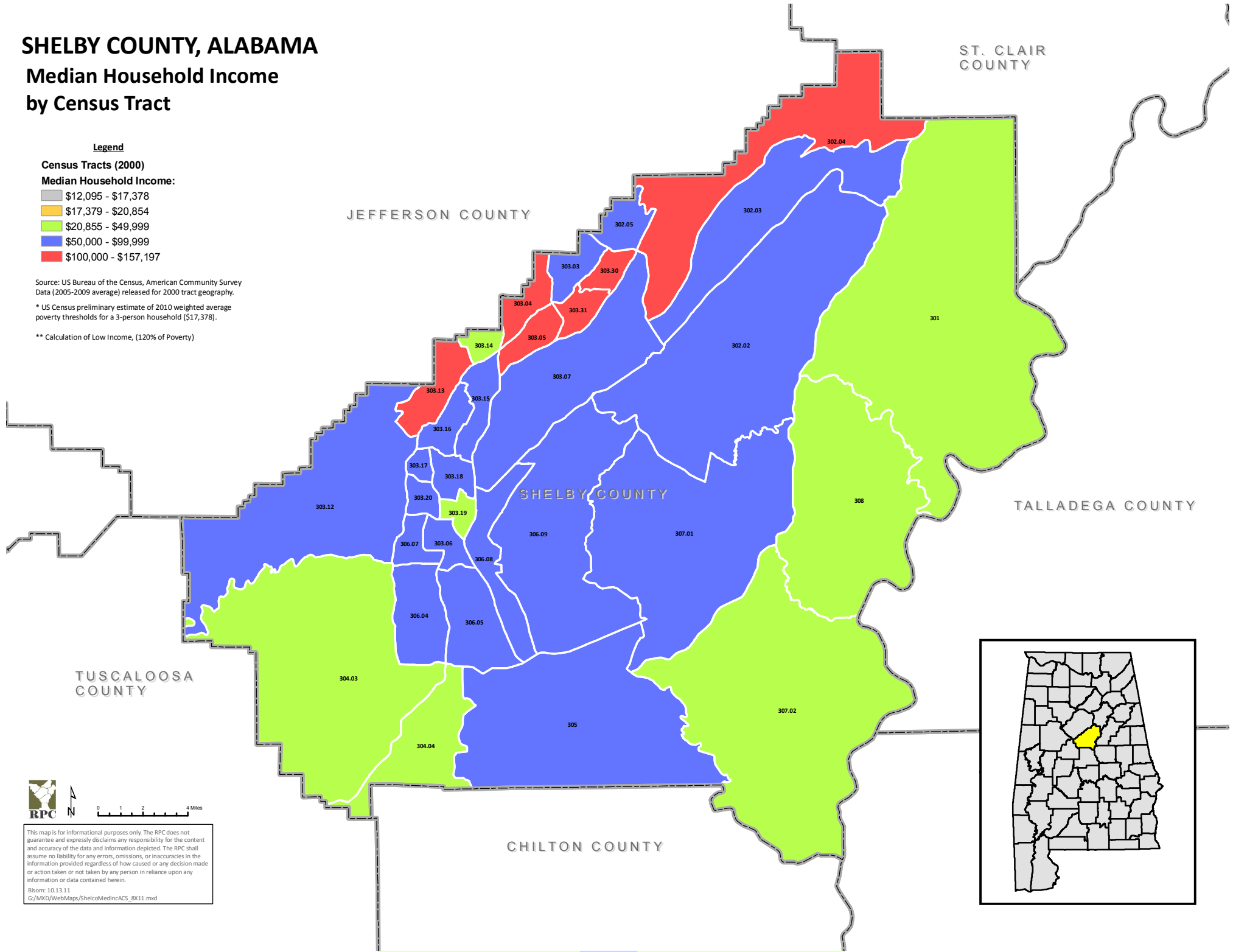
Median Household Income:

- \$12,095 - \$17,378
- \$17,379 - \$20,854
- \$20,855 - \$49,999
- \$50,000 - \$99,999
- \$100,000 - \$157,197

Source: US Bureau of the Census, American Community Survey Data (2005-2009 average) released for 2000 tract geography.

* US Census preliminary estimate of 2010 weighted average poverty thresholds for a 3-person household (\$17,378).

** Calculation of Low Income, (120% of Poverty)



TUSCALOOSA COUNTY

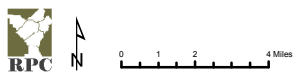
JEFFERSON COUNTY

ST. CLAIR COUNTY

SHELBY COUNTY

TALLADEGA COUNTY

CHILTON COUNTY



This map is for informational purposes only. The RPC does not guarantee and expressly disclaims any responsibility for the content and accuracy of the data and information depicted. The RPC shall assume no liability for any errors, omissions, or inaccuracies in the information provided regardless of how caused or any decision made or action taken or not taken by any person in reliance upon any information or data contained herein.
 Bism: 10.13.11
 G:/MXD/WebMaps/ShelcoMedIncACS_8X11.mxd

