

# ST. CLAIR COUNTY, ALABAMA

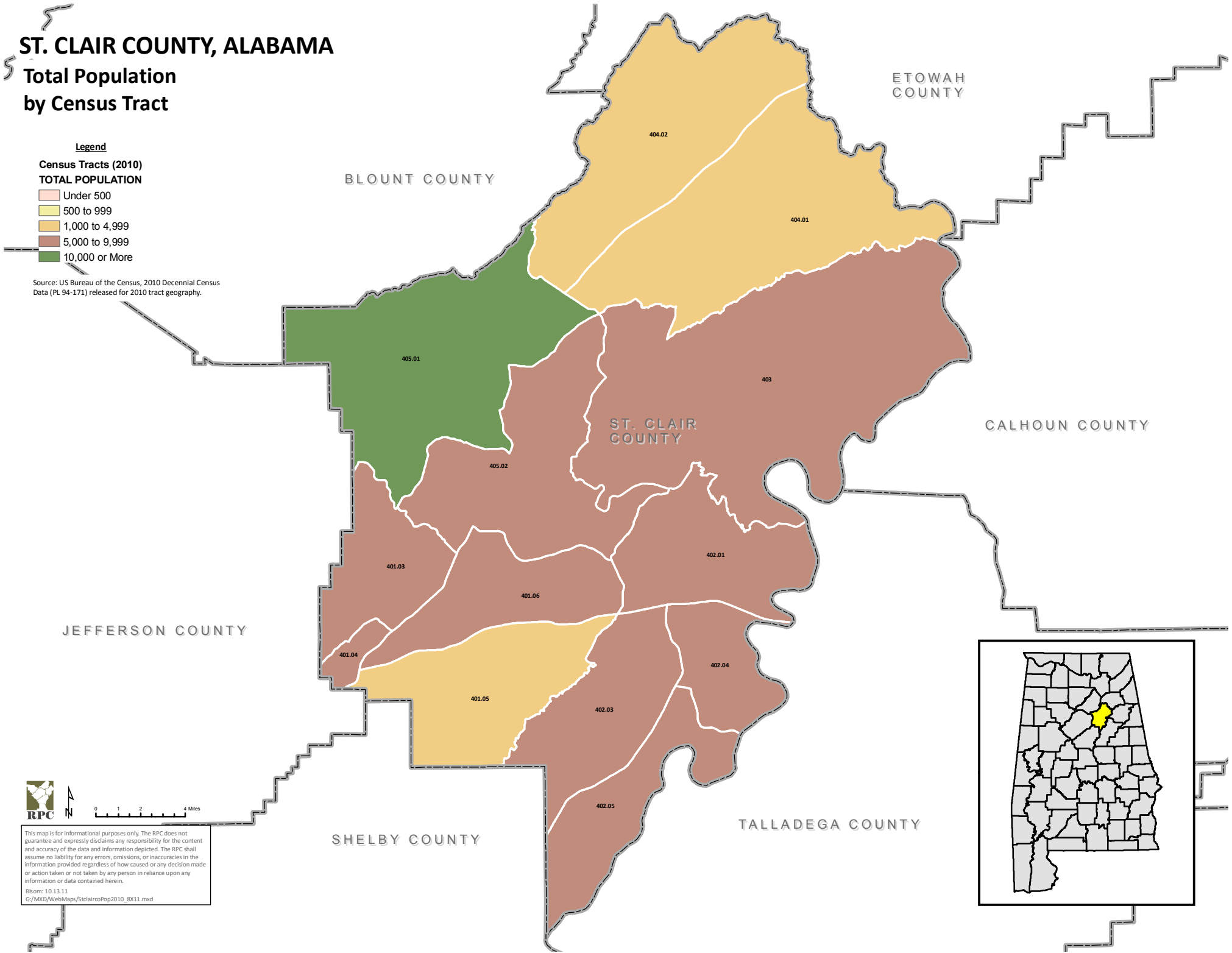
## Total Population by Census Tract

### Legend

#### Census Tracts (2010) TOTAL POPULATION

- Under 500
- 500 to 999
- 1,000 to 4,999
- 5,000 to 9,999
- 10,000 or More

Source: US Bureau of the Census, 2010 Decennial Census Data (PL 94-171) released for 2010 tract geography.



0 1 2 4 Miles

This map is for informational purposes only. The RPC does not guarantee and expressly disclaims any responsibility for the content and accuracy of the data and information depicted. The RPC shall assume no liability for any errors, omissions, or inaccuracies in the information provided regardless of how caused or any decision made or action taken or not taken by any person in reliance upon any information or data contained herein.

Bisom: 10.13.11  
G:/MXD/WebMaps/StclairPop2010\_8X11.mxd

