

# BIRMINGHAM REGIONAL FREIGHT PLAN

Adopted March 13, 2019



## Executive Summary

# What is the Regional Freight Plan?

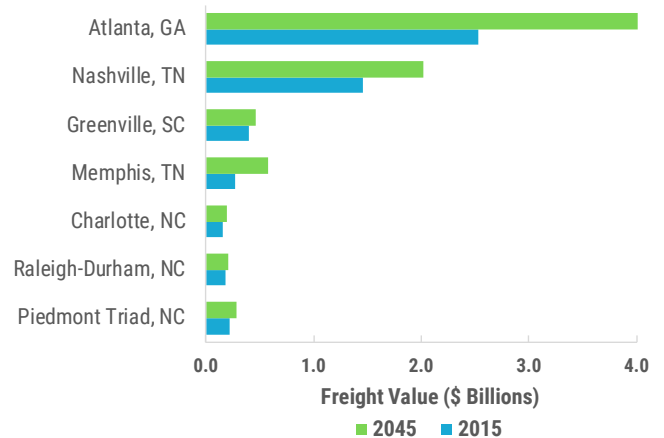
The Birmingham Metropolitan Planning Organization (MPO) has adopted its first-ever Regional Freight Plan to better incorporate freight needs in the transportation planning and project development processes, as well as to help educate elected officials about the importance of freight mobility to the region's economy and quality of life. The Plan identifies key policies and infrastructure improvements necessary to maintain the region's competitive edge in a rapidly evolving global economy. The full Plan may be accessed at [www.rpcgb.org/freight](http://www.rpcgb.org/freight).



## Why do we need a Regional Freight Plan?

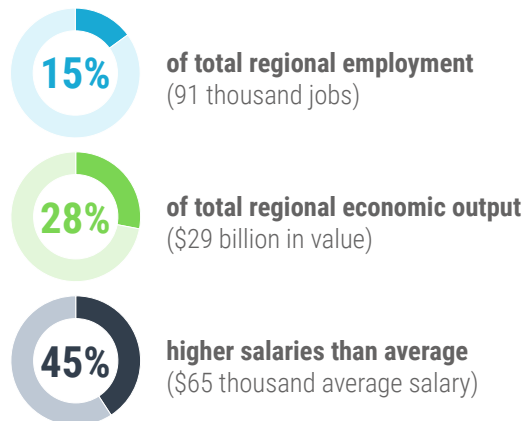
Freight movement matters more than it ever has before. While the greater Birmingham region has shed its historic reliance on the coal and steel industries for a diverse, service-based economy centered on finance and medical research, the region's economic competitiveness is inextricably linked to efficient freight movement. Both old and new industry sectors rely on complex supply chains crossing numerous jurisdictions and multiple modes. Value of time and system efficiency are critical. The reliability of the freight network is key to a carrier's ability to meet ever-tightening service requirements.

Trading Partner

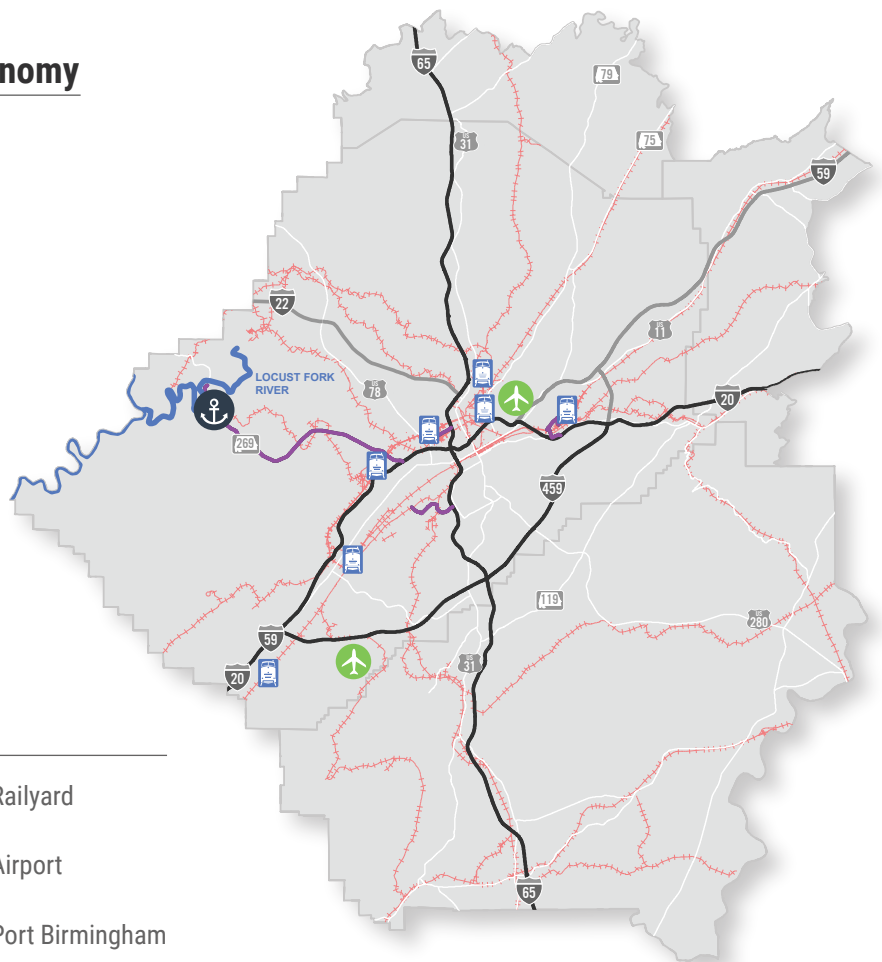
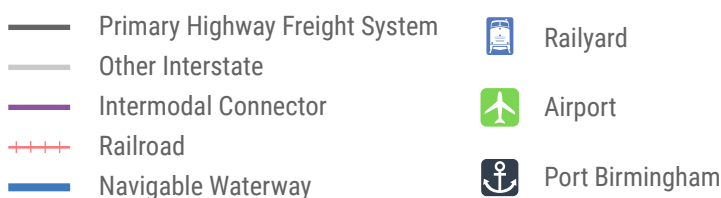


## Freight contributions to regional economy

Birmingham's freight industry is a critical component of the regional economy.



## Regional Freight Network Map







## Freight Needs and Priorities

Freight infrastructure needs are extensive; funding is not. In order to ensure our limited funding capacity can deliver the greatest impact, the Plan identified key project needs and prioritized them according to their potential to advance regional freight goals. Projects were categorized and scored by mode – road, airport, or port. These scores were then ranked and converted into high, medium, or low priorities. The tables below outline the high-priority projects within each mode, and the map at right locates these projects within the region. The full list of projects can be found in the Plan.



**80**

Total Road Projects



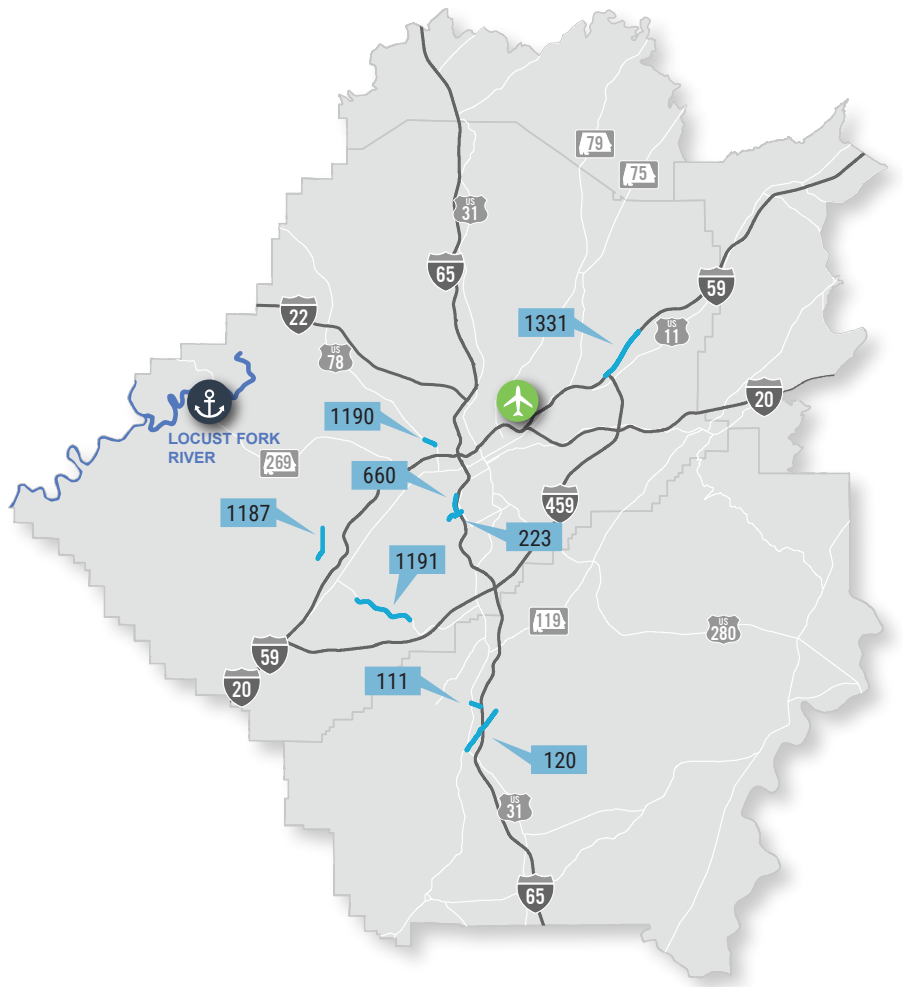
**48**

Total Airport Projects



**5**

Total Port Projects



High-Priority Fiscally Constrained Road Projects	MPO Map ID	Road	Project Type	Location
	1190	US-78	Additional Lanes and Bridge Replacement	Finley Blvd to Pratt Hwy
	1331	I-59	Operations & Capacity	I-459 to Chalkville Rd
	223	Oxmoor Rd	Intersection Improvements	Barber Ct. and Oxmoor Rd.
	660	I-65	Additional Lanes and Bridge Replacement	Oxmoor Rd to Greensprings Ave
	1191	AL-150	Additional Lanes	Morgan Rd to Parkwood Rd
	111	Shelby CR-52	Additional Lanes	I-65 to US 31
	120	Shelby CR-11	Widening and Resurfacing	US-31 to East Weatherly Entrance
	1187	Brooklane Drive	Aligning & Additional Lanes	Allison Bonnett to Hueytown Rd

High-Priority Airport Projects	Project ID	Airport	Project Name	Project Type
	102	BHM	Taxiway H Realignment	Design, Utilities, and Construction
	99	BHM	Taxiway A Realignment	Design, Utilities, and Construction
	120	BHM	Village Creek Mitigation	Construction
	97	BHM	Air Cargo Avenue Realignment	Construction
	130	BHM	Runway 5-23 Rehabilitation	Design, Operations and, Construction
	141	BHM	New Entrance Road	Design, Operations and, Construction

High-Priority Port Projects	Project ID	Project Name	Project Type
	121	Port Birmingham Warehouse	Design, Utilities, and Construction
	122	Container On Barge Service	Design, Utilities, and Construction
	123	Rail Siding Expansion	Construction
	124	Terminal-Related Dredging Improvements	Construction
	125	Truck-Related Technology Investments	Design, Operations and, Construction



## Recommendations

In addition to recommending specific projects, the Regional Freight Plan also recommends a suite of policy actions that will drive the freight program today and into the future. These recommendations are organized around four strategies. Seventeen recommendations have been developed to provide a roadmap for the implementation of an ongoing freight program.



## Want to learn more?

To review the full Regional Freight Plan, please visit [www.rpcgb.org/freight](http://www.rpcgb.org/freight), or email [lpuckett@rpcgb.org](mailto:lpuckett@rpcgb.org).



## Establish and Enrich Partnerships and Process

- **Establish** protocols to continue the Freight Transportation Advisory Committee (FTAC), including membership, role, meeting frequency
- **Incorporate** freight considerations into smart growth and complete streets planning
- **Understand** the freight transportation needs of the region's legacy and emerging economic sectors and incorporate those needs into economic development strategy
- **Develop** repository of public data on freight and economic indicators for the region
- **Monitor** performance based on key measures
- **Coordinate** with industry and educators to address workforce development issues and to supply the economy with skilled and prepared workers



## Seize Economic Development Opportunities

- **Identify** lands suitable for industrial park development
- **Conduct** market feasibility study to support Port Birmingham development
- **Evaluate** opportunities for brownfield redevelopment for industrial use
- **Develop** marketing brochure and/or other media to promote Birmingham's industrial and freight capacity
- **Partner** with economic development community to market the region



## Perform Planning Studies and Environmental Reviews

- **Develop** at-grade crossing inventory with ranking related to needed improvements
- **Designate** key truck routes/network for Birmingham region
- **Conduct** truck parking study to identify unmet parking demand
- **Develop** an urban goods movement strategy
- **Evaluate**, on an ongoing basis, emerging supply chain and transportation technologies that could impact use of infrastructure in the future



## Program and Fund Improvements

- **Identify** and pursue available transportation and economic development grant programs